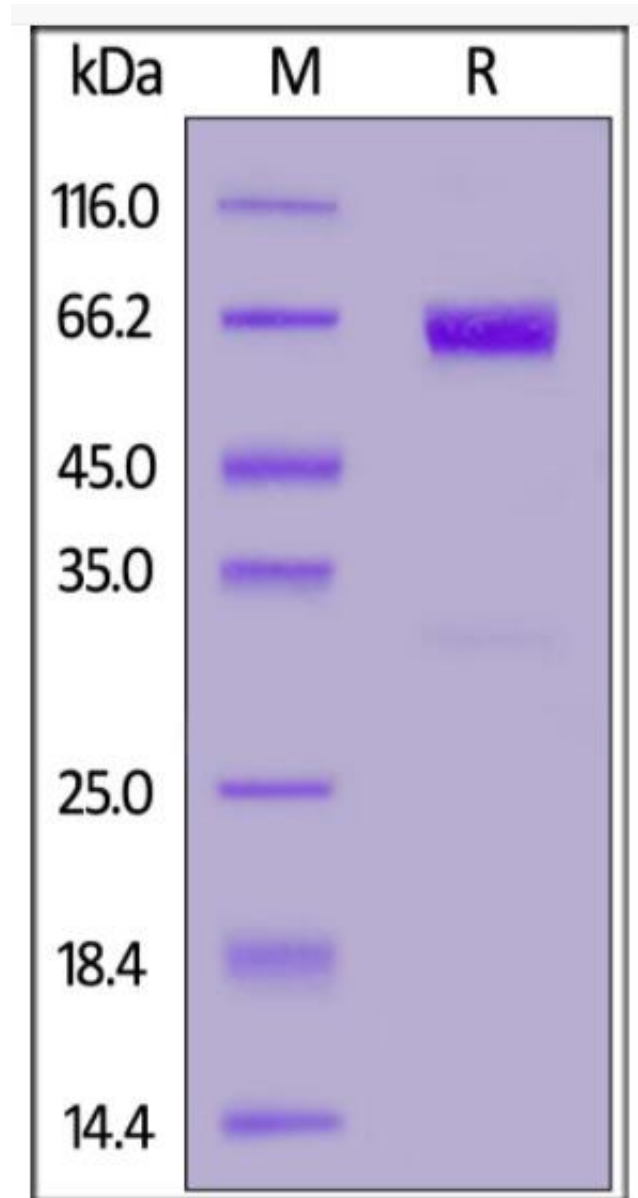


Recombinant Rat Pdcd1 protein, C-Fc Tag

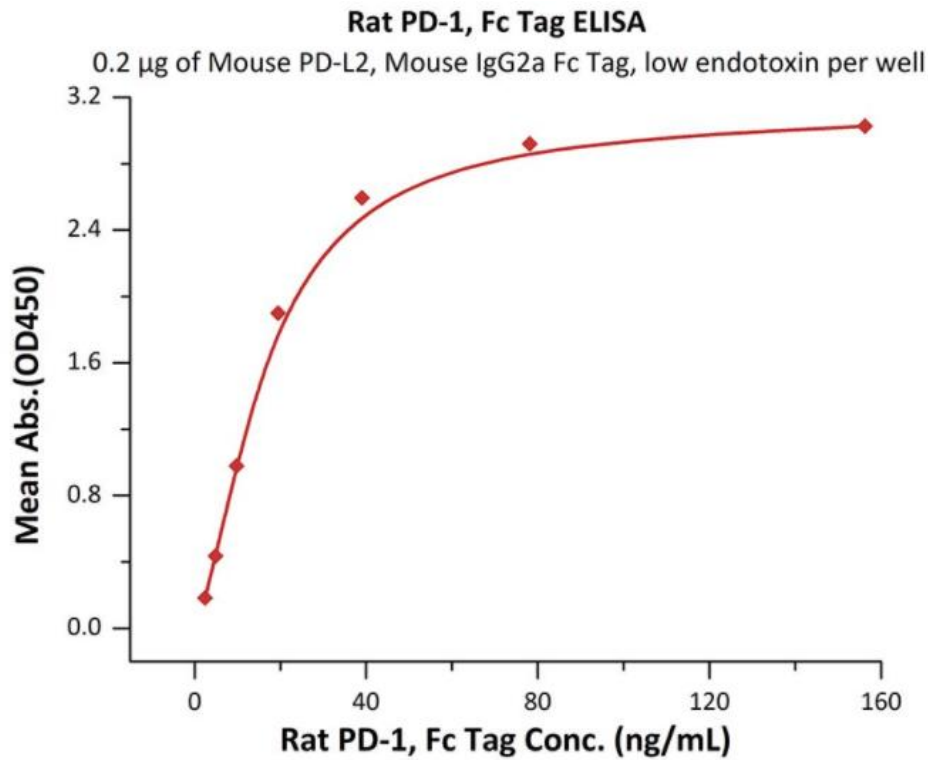
Product Information

Cat	<i>IMP-197</i>
Official Symbol	<i>Pdcd1</i>
Product Overview	<i>Recombinant Rat Pdcd1 protein(AA Leu 25-Gln 167)(Accession # NP_001100397.1) is expressed from human 293 cells (HEK293). This protein carries a human IgG1 Fc tag at the C-terminus.</i>
Expression System	<i>HEK293</i>
Species	<i>Rat</i>
Tag	<i>C-Fc Tag</i>
Form	<i>Lyophilized from sterile Tris with Glycine, Arginine and NaCl, pH7.5, 10% trehalose.</i>
Molecular Mass	<i>This protein carries a human IgG1 Fc tag at the C-terminus. The protein has a calculated MW of 42.9 kDa. The protein migrates as 50-60 kDa under reducing (R) condition (SDS-PAGE).</i>
Protein length	<i>Leu 25-Gln 167</i>
Endotoxin	<i>Less than 1.0 EU per ug by the LAL method.</i>
Purity	<i>>95% as determined by SDS-PAGE.</i>
Storage	<i>For long term storage, the product should be stored at lyophilized state at -20°C or lower. Please avoid repeated freeze-thaw cycles. This product is stable after storage at: -20°C to -70°C for 12 months in lyophilized state; -70°C for 3 months under sterile conditions after reconstitution.</i>
Reconstitution	<i>It is recommended that sterile water be added to the vial to prepare a stock solution of 0.2 mg/ml. Centrifuge the vial at 4°C before opening to recover the entire contents.</i>
SDS-PAGE	



Rat PD-1, Fc Tag on SDS-PAGE under reducing (R) condition. The gel was stained overnight with Coomassie Blue. The purity of the protein is greater than 95%.

Bioactivity-ELISA 1



Immobilized Mouse PD-L2, Mouse IgG2a Fc Tag, low endotoxin at 2 ug/mL (100 uL/well) can bind Rat PD-1, Fc Tag with a linear range of 5-20 ng/mL.