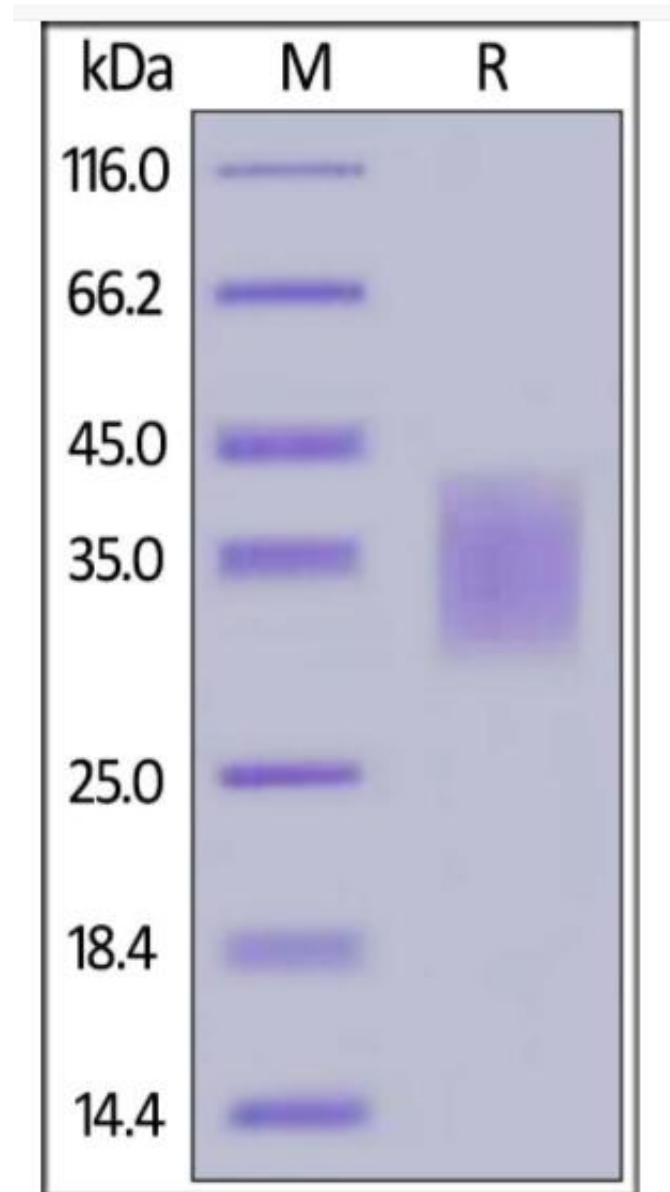


Recombinant Rat Pdcd1 protein, C-His Tag

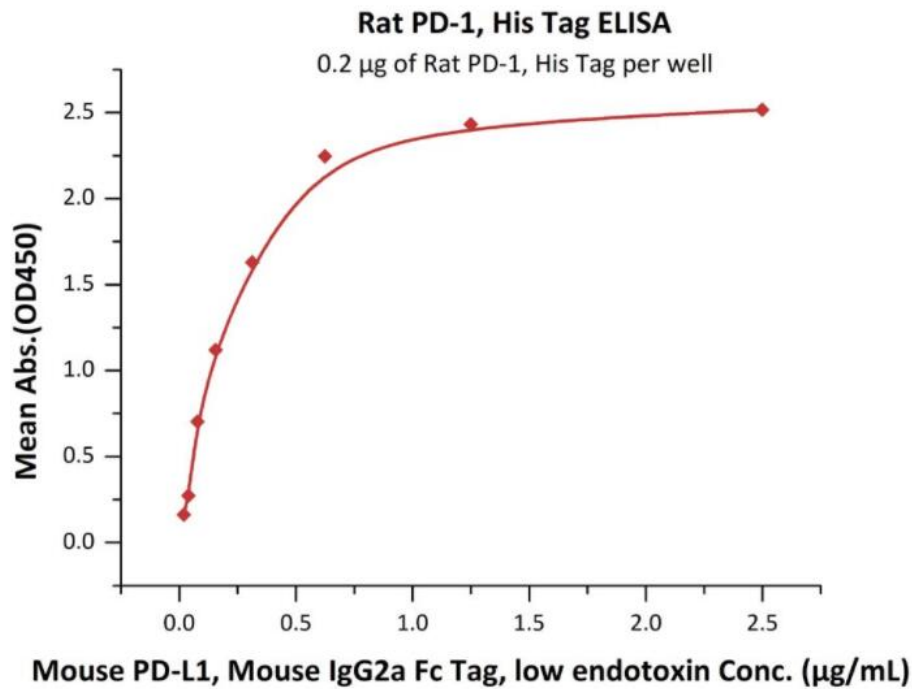
Product Information

Cat	IMP-198
Official Symbol	Pdcd1
Product Overview	Recombinant Rat Pdcd1 protein(AA Leu 25-Gln 167)(Accession # NP_001100397.1) is expressed from human 293 cells (HEK293). This protein carries a polyhistidine tag at the C-terminus.
Expression System	HEK293
Species	Rat
Tag	C-His Tag
Form	Lyophilized from sterile PBS, pH7.4, 10% trehalose.
Molecular Mass	This protein carries a polyhistidine tag at the C-terminus. The protein has a calculated MW of 18.1 kDa. The protein migrates as 30-44 kDa under reducing (R) condition (SDS-PAGE).
Protein length	Leu 25-Gln 167
Endotoxin	Less than 1.0 EU per ug by the LAL method.
Purity	>95% as determined by SDS-PAGE.
Storage	For long term storage, the product should be stored at lyophilized state at -20°C or lower. Please avoid repeated freeze-thaw cycles. This product is stable after storage at: -20°C to -70°C for 12 months in lyophilized state; -70°C for 3 months under sterile conditions after reconstitution.
Reconstitution	It is recommended that sterile water be added to the vial to prepare a stock solution of 0.2 mg/ml. Centrifuge the vial at 4°C before opening to recover the entire contents.
SDS-PAGE	



Rat PD-1, His Tag on SDS-PAGE under reducing (R) condition. The gel was stained overnight with Coomassie Blue. The purity of the protein is greater than 95%.

Bioactivity-ELISA 1



Immobilized Rat PD-1, His Tag at 2 µg/mL (100 µL/well) can bind Mouse PD-L1, Mouse IgG2a Fc Tag, low endotoxin with a linear range of 0.02-0.313 µg/mL.