

# Recombinant Rat NECTIN4 Protein (Tyr28-Val348), C-6×His-tagged

## Product Information

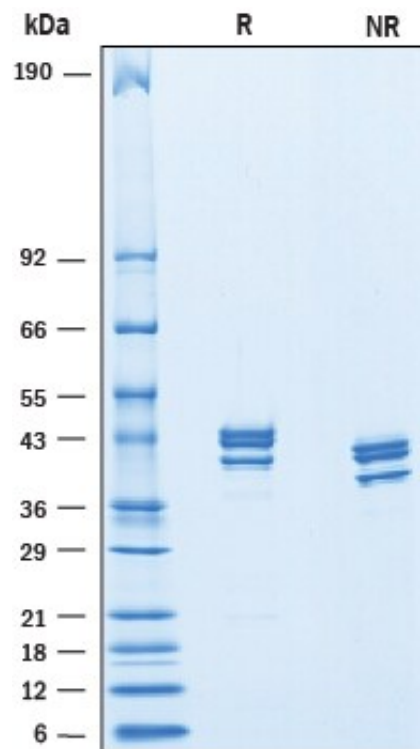
---

<b>Cat</b>	IMP-10003
<b>Official Symbol</b>	NECTIN4
<b>Product Overview</b>	Recombinant Rat Nectin-4 protein (Tyr28-Val348) with a C-terminal 6×His tag was expressed in Mouse myeloma cell line.
<b>Description</b>	<p>This gene encodes a member of the nectin family. The encoded protein contains two immunoglobulin-like (Ig-like) C2-type domains and one Ig-like V-type domain. It is involved in cell adhesion through trans-homophilic and -heterophilic interactions. It is a single-pass type I membrane protein. The soluble form is produced by proteolytic cleavage at the cell surface by the metalloproteinase ADAM17/TACE. The secreted form is found in both breast tumor cell lines and breast tumor patients. Mutations in this gene are the cause of ectodermal dysplasia-syndactyly syndrome type 1, an autosomal recessive disorder. Alternatively spliced transcript variants have been found but the full-length nature of the variant has not been determined.</p>
<b>Expression System</b>	Mouse myeloma cell line
<b>Species</b>	Rat
<b>Tag</b>	C-6×His
<b>Predicted N Terminal</b>	Tyr28
<b>Form</b>	Lyophilized from a 0.2 µm filtered solution in PBS.
<b>Molecular Mass</b>	Predicted Molecular Mass: 35 kDa SDS-PAGE: 38-48 kDa, reducing conditions
<b>Protein length</b>	Tyr28-Val348
<b>Bio-activity</b>	Measured by the ability of the immobilized protein to support the adhesion of NIH-3T3 mouse embryonic fibroblast cells. The ED50 for this effect is 0.1-0.8 µg/mL.
<b>Endotoxin</b>	
<b>Purity</b>	>95%, by SDS-PAGE visualized with Silver Staining and quantitative densitometry by Coomassie Blue Staining.
<b>Storage</b>	Use a manual defrost freezer and avoid repeated freeze-thaw cycles. 12 months from date of receipt, -20 to -70 centigrade as supplied. 1 month, 2 to 8 centigrade under sterile conditions after reconstitution. 3 months, ≤ -20 centigrade under sterile conditions after reconstitution.

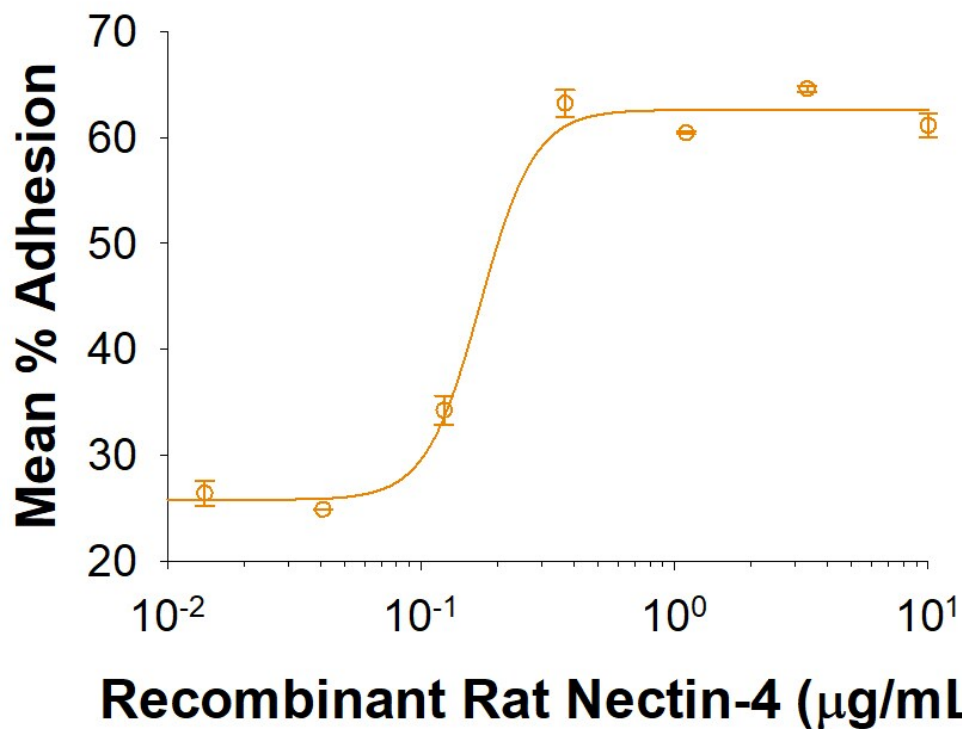
**Reconstitution**

Reconstitute at 500 µg/mL in PBS.

**SDS-PAGE**



**Bioactivity-ELISA 1**



***Measured by the ability of the immobilized protein to support the adhesion of NIH-3T3 mouse embryonic fibroblast cells. The ED50 for this effect is 0.1-0.8 µg/mL.***