

Recombinant Human EGFR Protein (Leu25-Ser645), C-Fc and Avi-tagged, Biotinylated conjugated

Product Information

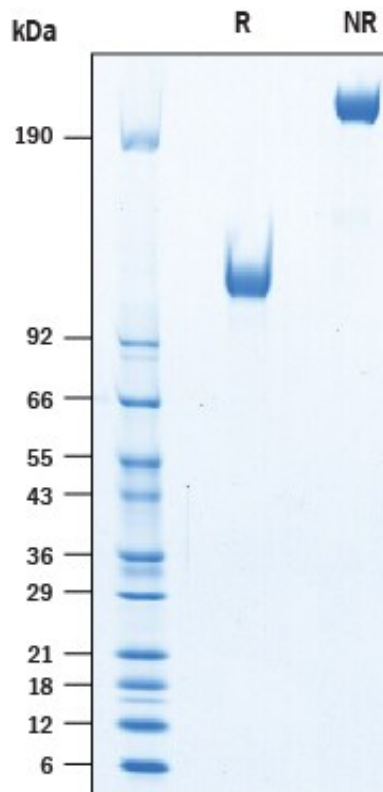
Cat	IMP-10077
Official Symbol	EGFR
Product Overview	<i>Biotinylated recombinant Human EGFR Protein (Leu25-Ser645) with a human IgG1 (Pro100-Lys330) Fc tag and Avi tag at C-terminus was expressed in Human embryonic kidney cell.</i>
Description	<i>The protein encoded by this gene is a transmembrane glycoprotein that is a member of the protein kinase superfamily. This protein is a receptor for members of the epidermal growth factor family. EGFR is a cell surface protein that binds to epidermal growth factor, thus inducing receptor dimerization and tyrosine autophosphorylation leading to cell proliferation. Mutations in this gene are associated with lung cancer. EGFR is a component of the cytokine storm which contributes to a severe form of Coronavirus Disease 2019 (COVID-19) resulting from infection with severe acute respiratory syndrome coronavirus-2 (SARS-CoV-2).</i>
Expression System	HEK293
Species	Human
Tag	C-Fc and Avi
Form	Lyophilized from a 0.2 µm filtered solution in PBS with Trehalose.
Conjugate	Biotinylated
Molecular Mass	Predicted Molecular Mass: 97 kDa SDS-PAGE: 110-130 kDa, under reducing conditions
Protein length	Leu25-Ser645
Bio-activity	<i>Measured by its binding ability in a functional ELISA. When Human EGFR Antibody is immobilized at 0.25 µg/mL, 100 µL/well, the concentration of Recombinant Human EGFR Fc Chimera Avi-tag that produces 50% of the optimal binding response is approximately 2-15 ng/mL.</i>
Endotoxin	
Purity	>95%, by SDS-PAGE visualized with Silver Staining and quantitative densitometry by Coomassie Blue Staining.
Notes	Disulfide-linked homodimer, biotinylated via Avi-tag
Storage	Use a manual defrost freezer and avoid repeated freeze-thaw cycles. 12 months from date of receipt, -20 to -70 centigrade as supplied. 1 month, 2

to 8 centigrade under sterile conditions after reconstitution. 3 months, -20 to -70 centigrade under sterile conditions after reconstitution.

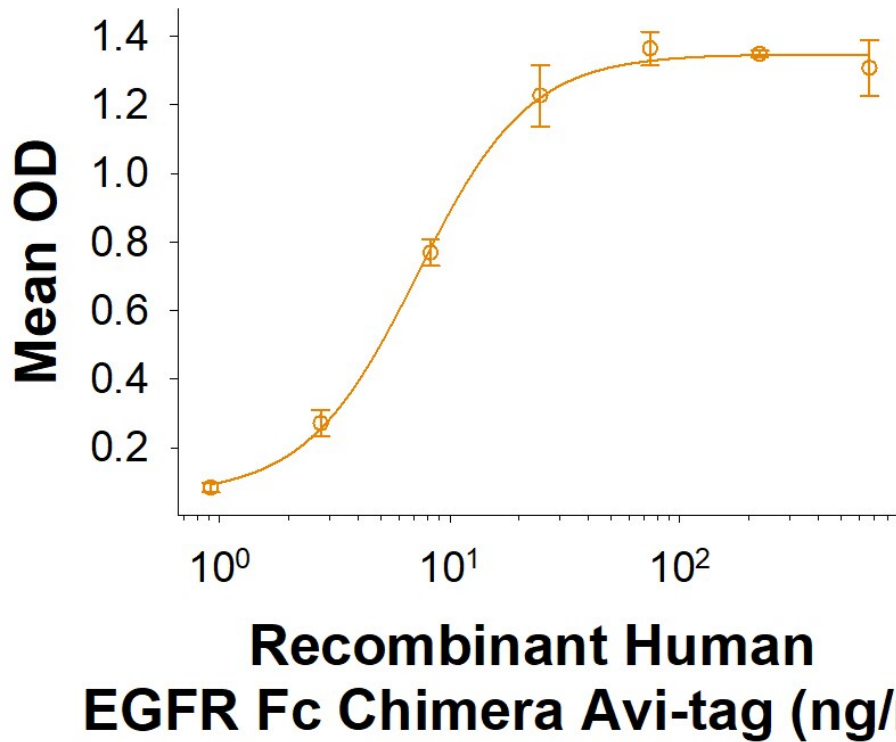
Reconstitution

Reconstitute at 500 µg/mL in PBS.

SDS-PAGE



Bioactivity-ELISA 1



Measured by its binding ability in a functional ELISA. When Human EGFR Antibody is immobilized at 0.25 $\mu\text{g/mL}$, 100 $\mu\text{L/well}$, the concentration of Recombinant Human EGFR Fc Chimera Avi-tag that produces 50% of the optimal binding response is approximately 2-15 ng/mL.