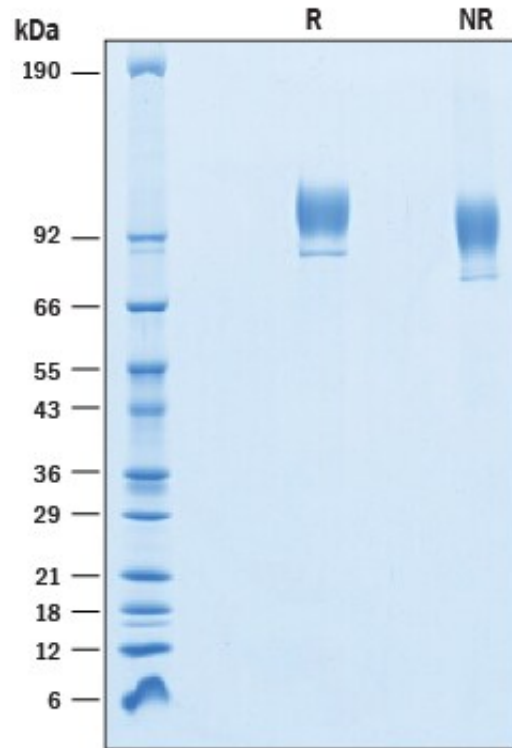


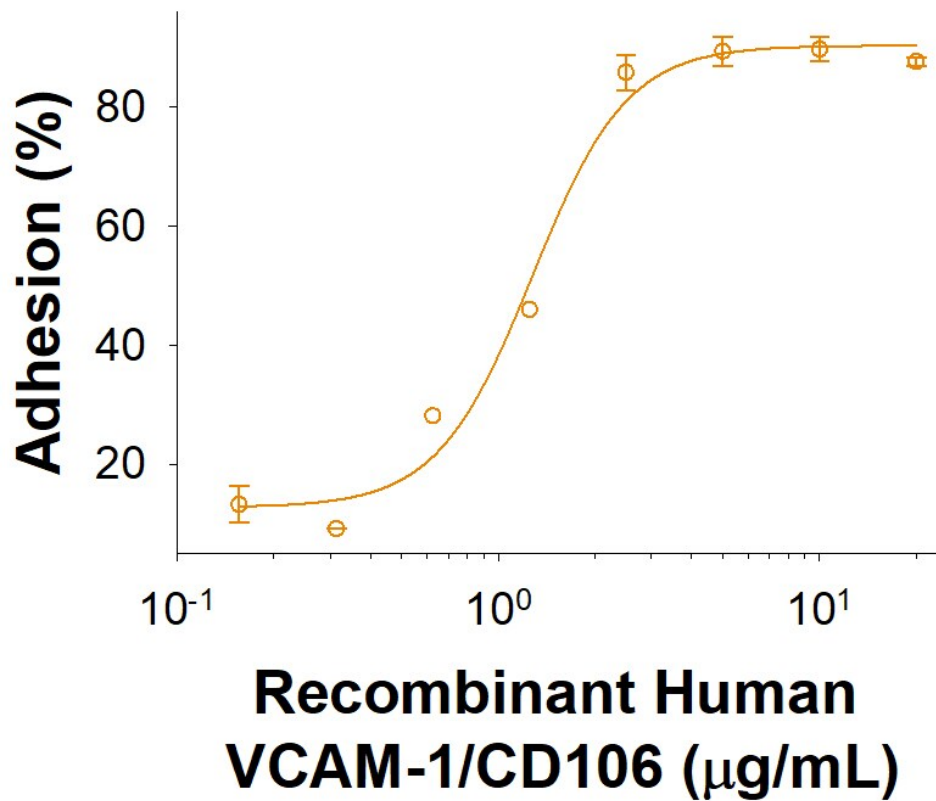
Recombinant Human VCAM1 Protein (Phe25-Glu698), C-6×His-tagged

Product Information

Cat	IMP-9571
Official Symbol	VCAM1
Product Overview	Recombinant human VCAM-1/CD106 protein (Phe25-Glu698), with a C-terminal 6×His tag was expressed in Chinese Hamster Ovary cell line.
Description	<i>This gene is a member of the Ig superfamily and encodes a cell surface sialoglycoprotein expressed by cytokine-activated endothelium. This type I membrane protein mediates leukocyte-endothelial cell adhesion and signal transduction, and may play a role in the development of atherosclerosis and rheumatoid arthritis. Three alternatively spliced transcripts encoding different isoforms have been described for this gene.</i>
Expression System	CHO
Species	Human
Tag	C-6×His
Predicted N Terminal	Phe25
Form	Lyophilized from a 0.2 µm filtered solution in PBS.
Molecular Mass	Predicted Molecular Mass: 75 kDa SDS-PAGE: 80-110 kDa, under reducing conditions
Protein length	Phe25-Glu698
Bio-activity	Measured by the ability of the immobilized protein to support the adhesion of U937 human histiocytic lymphoma cells. The ED50 for this effect is 0.5-3 µg/mL.
Endotoxin	
Purity	>95%, by SDS-PAGE visualized with Silver Staining and quantitative densitometry by Coomassie Blue Staining.
Storage	Use a manual defrost freezer and avoid repeated freeze-thaw cycles. 12 months from date of receipt, -20 to -70 centigrade as supplied. 2 weeks, 2 to 8 centigrade under sterile conditions after reconstitution. 3 months, -20 to -70 centigrade under sterile conditions after reconstitution.
Reconstitution	Reconstitute at 500 µg/mL in PBS.
SDS-PAGE	



Bioactivity-ELISA 1



Measured by the ability of the immobilized protein to support the adhesion of U937 human histiocytic lymphoma cells. The ED50 for this effect is 0.5-3 µg/mL.