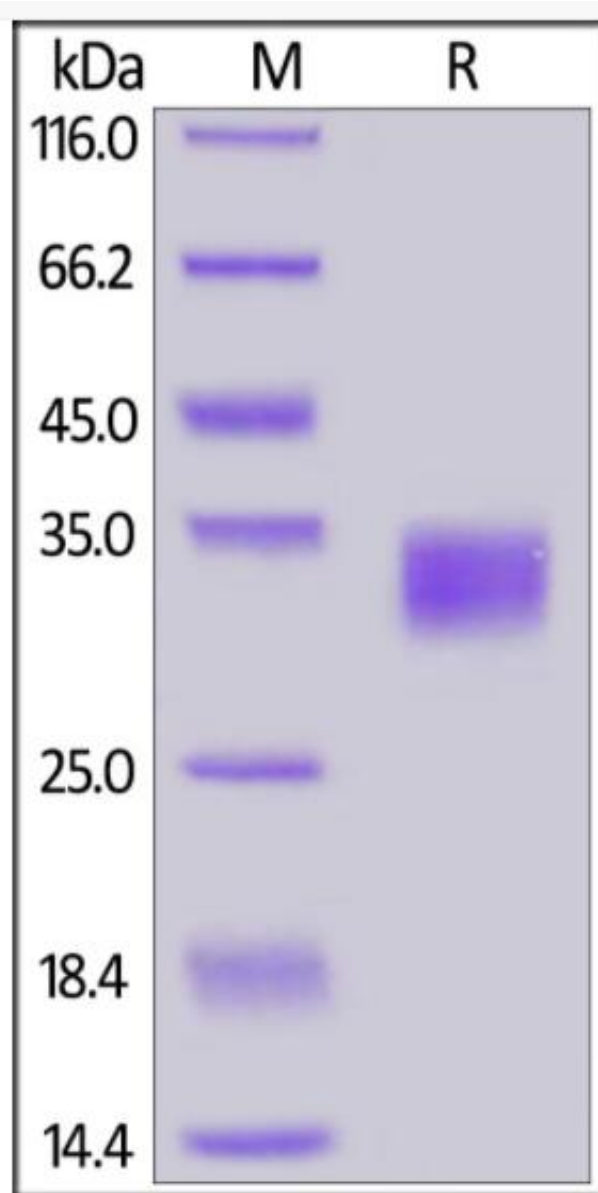


# Recombinant Human CD274 protein, C-His Tag

## Product Information

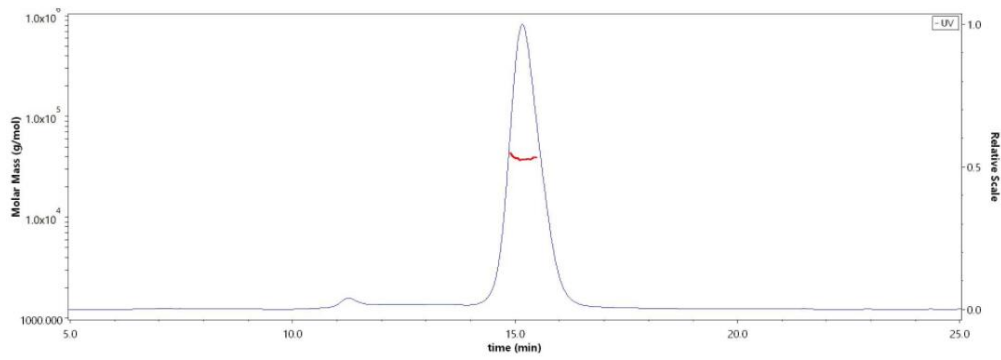
---

<b>Cat</b>	IMP-241
<b>Official Symbol</b>	CD274
<b>Product Overview</b>	Recombinant Human CD274 protein(AA Phe 19-Arg 238)(Accession # NP_054862.1) is expressed from human 293 cells (HEK293). This protein carries a polyhistidine tag at the C-terminus.
<b>Expression System</b>	HEK293
<b>Species</b>	Human
<b>Tag</b>	C-His Tag
<b>Form</b>	Lyophilized from sterile PBS, pH7.4, 10% trehalose.
<b>Molecular Mass</b>	This protein carries a polyhistidine tag at the C-terminus. The protein has a calculated MW of 26.0 kDa. The protein migrates as 35-42 kDa under reducing (R) condition (SDS-PAGE) due to glycosylation.
<b>Protein length</b>	Phe 19-Arg 238
<b>Endotoxin</b>	Less than 1.0 EU per ug by the LAL method.
<b>Purity</b>	>98% as determined by SDS-PAGE.
<b>Storage</b>	For long term storage, the product should be stored at lyophilized state at -20°C or lower. Please avoid repeated freeze-thaw cycles. This product is stable after storage at: -20°C to -70°C for 12 months in lyophilized state; -70°C for 3 months under sterile conditions after reconstitution.
<b>Reconstitution</b>	It is recommended that sterile water be added to the vial to prepare a stock solution of 0.2 mg/ml. Centrifuge the vial at 4°C before opening to recover the entire contents.
<b>SDS-PAGE</b>	



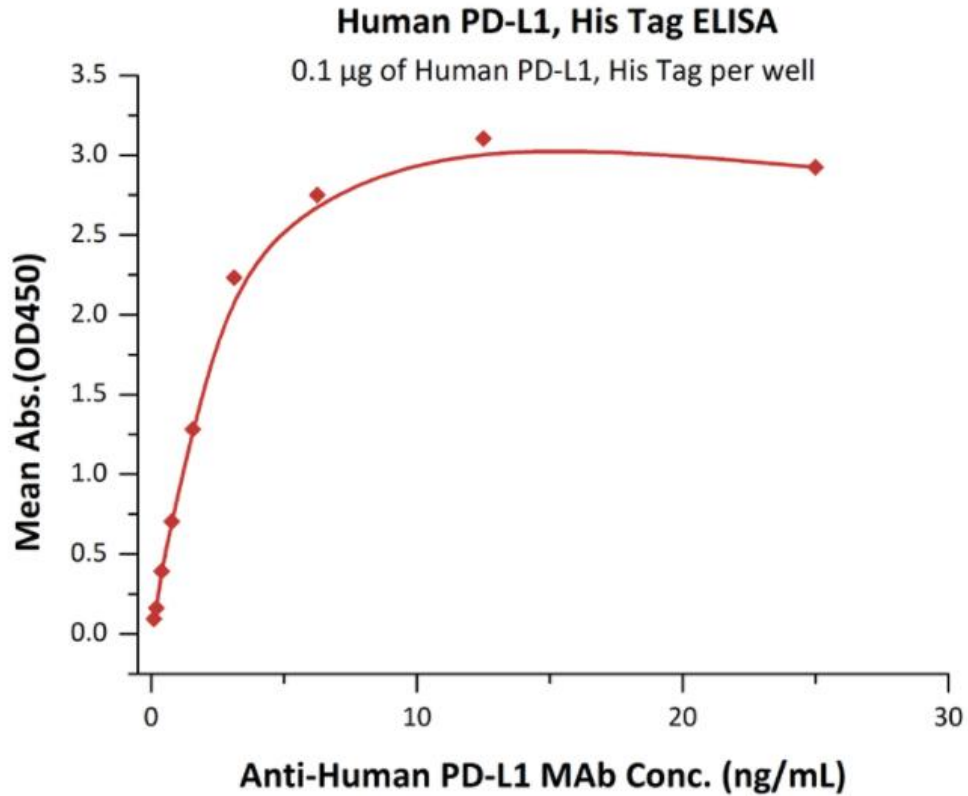
***Human PD-L1, His Tag on SDS-PAGE under reducing (R) condition. The gel was stained overnight with Coomassie Blue. The purity of the protein is greater than 98%.***

## **SEC-MALS 1**



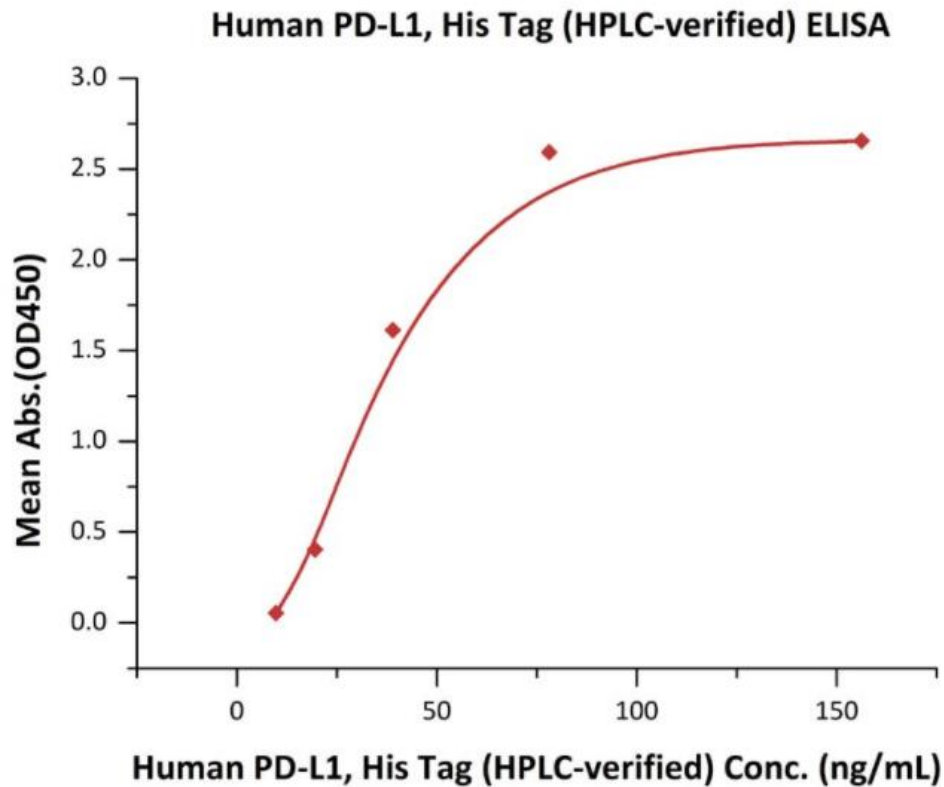
***The purity of Human PD-L1, His Tag was more than 90% and the molecular weight of this protein is around 35-50 kDa verified by SEC-MALS.***

### ***Bioactivity-ELISA 1***



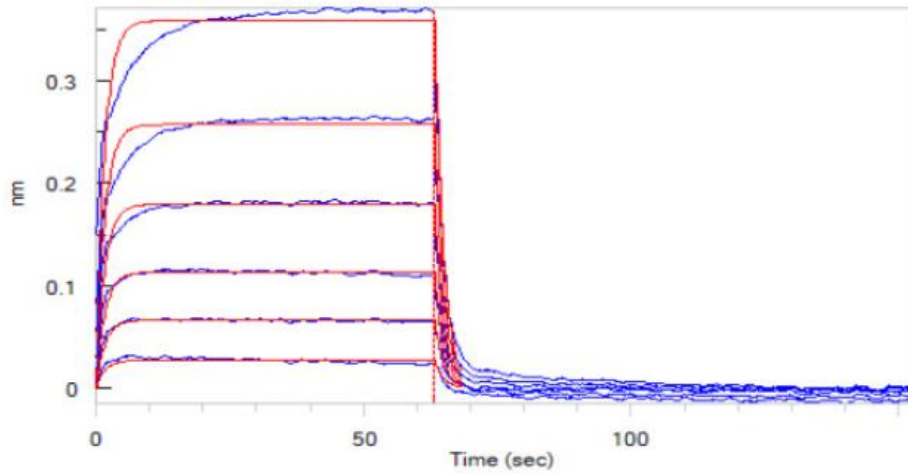
***Immobilized Human PD-L1, His Tag at 1 µg/mL (100 µL/well) can bind Anti-Human PD-L1 MAAb (Human IgG1) with a linear range of 0.1-3 ng/mL.***

## **Bioactivity-ELISA 2**



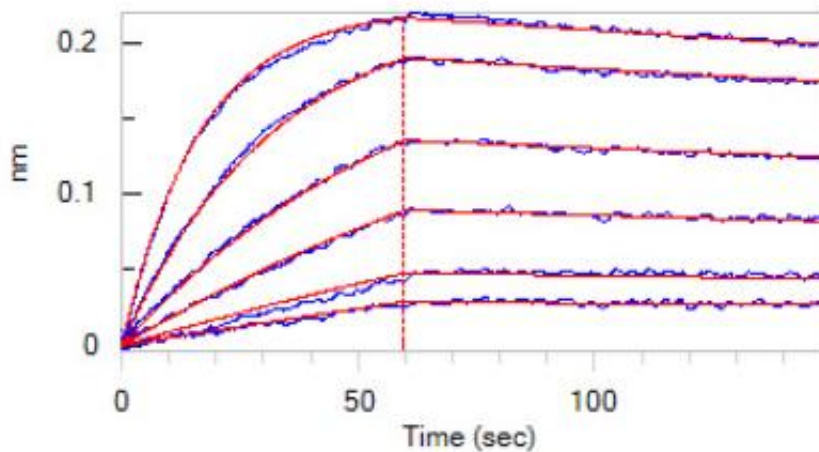
***Immobilized Human PD-L1, His Tag at series of concentration on Anti-His Tag (C-term) Antibody precoated (0.1 ug/well) plate, can bind Human PD-1, Mouse IgG2a Fc Tag (HPLC-verified) at 5 ug/mL (100 uL/well) with a linear range of 10-78 ng/mL.***

### **Bioactivity-BLI 1**



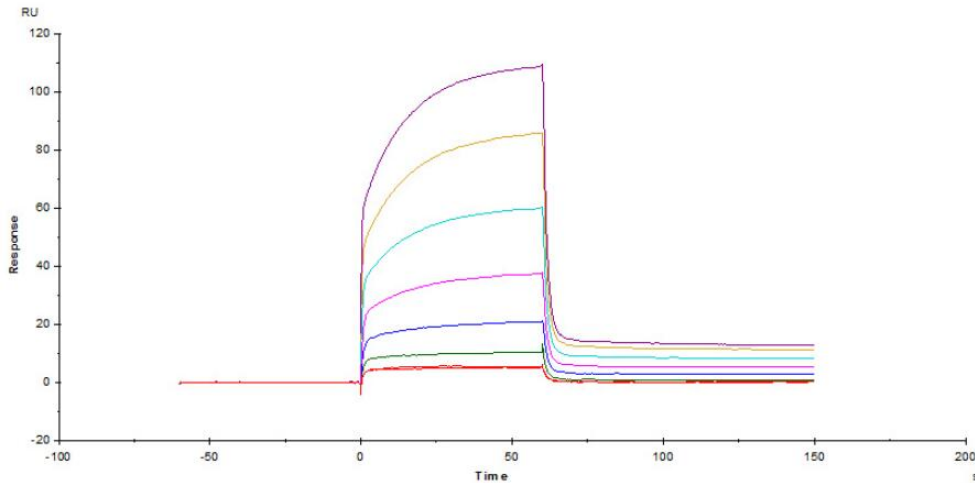
**Loaded Human PD-1, Fc Tag, low endotoxin on ProteinA Biosensor, can bind Human PD-L1, His Tag with an affinity constant of 5.3  $\mu$ M as determined in BLI assay (ForteBio Octet Red96e).**

**Bioactivity-BLI 2**



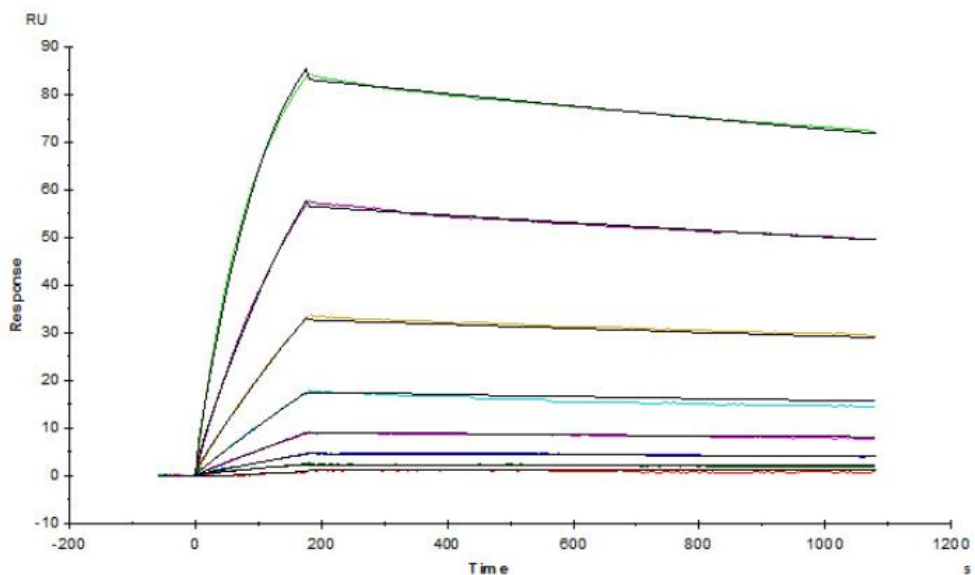
**Loaded Anti-Human PD-L1 MAb (Human IgG1) on AHC Biosensor, can bind Human PD-L1, His Tag with an affinity constant of 1.61 nM as determined in BLI assay (ForteBio Octet Red96e).**

**Bioactivity-SP**



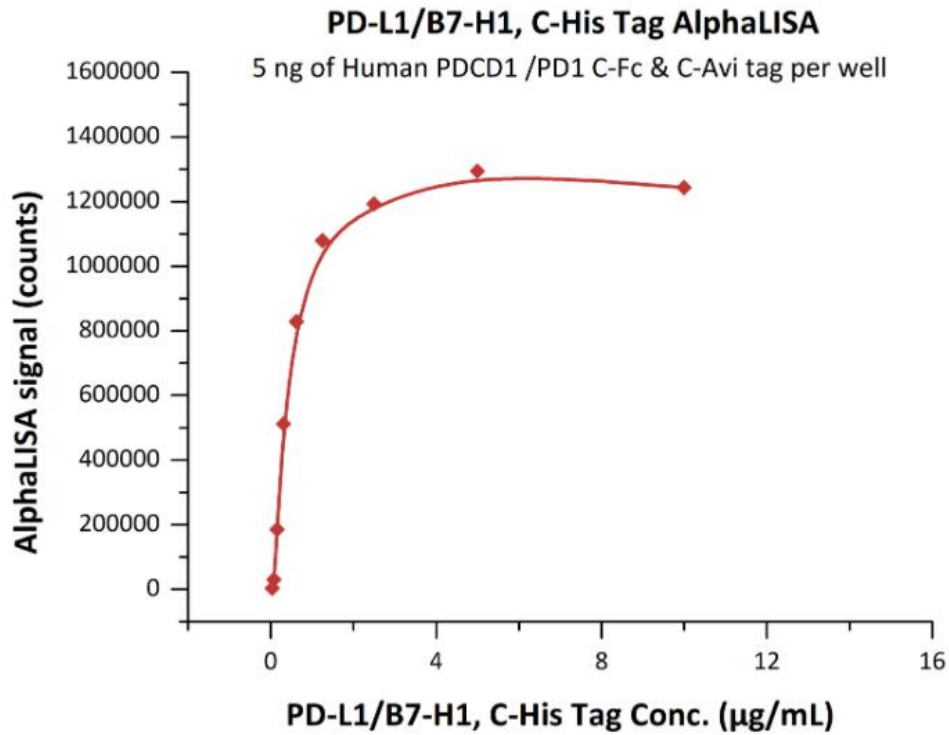
**Human PD-1, Fc Tag captured on CM5 chip via anti-human IgG Fc antibody, can bind Human PD-L1, His Tag with an affinity constant of 3.6  $\mu$ M as determined in a SPR assay (Biacore T200).**

**Bioactivity-SP**



**Anti-Human PD-L1 Mab (Human IgG1) captured on CM5 chip via anti-human IgG Fc antibodies surface, can bind Human PD-L1, His Tag with an affinity constant of 0.286 nM as determined in a SPR assay (Biacore T200).**

**Bioactivity-*alp***



***Biotinylated Human PD-1, Fc,Avitag at 1 ug/mL (5 uL/well) can bind Human PD-L1, His Tag with a linear range of 0.02-0.625 ug/mL as determined in a alphaLISA homogeneous assay.***