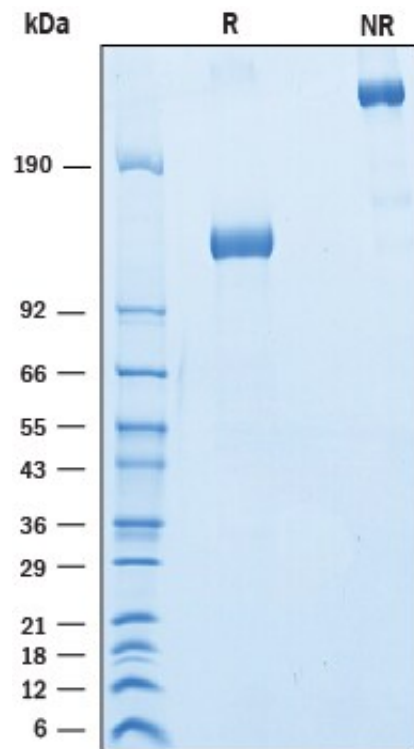


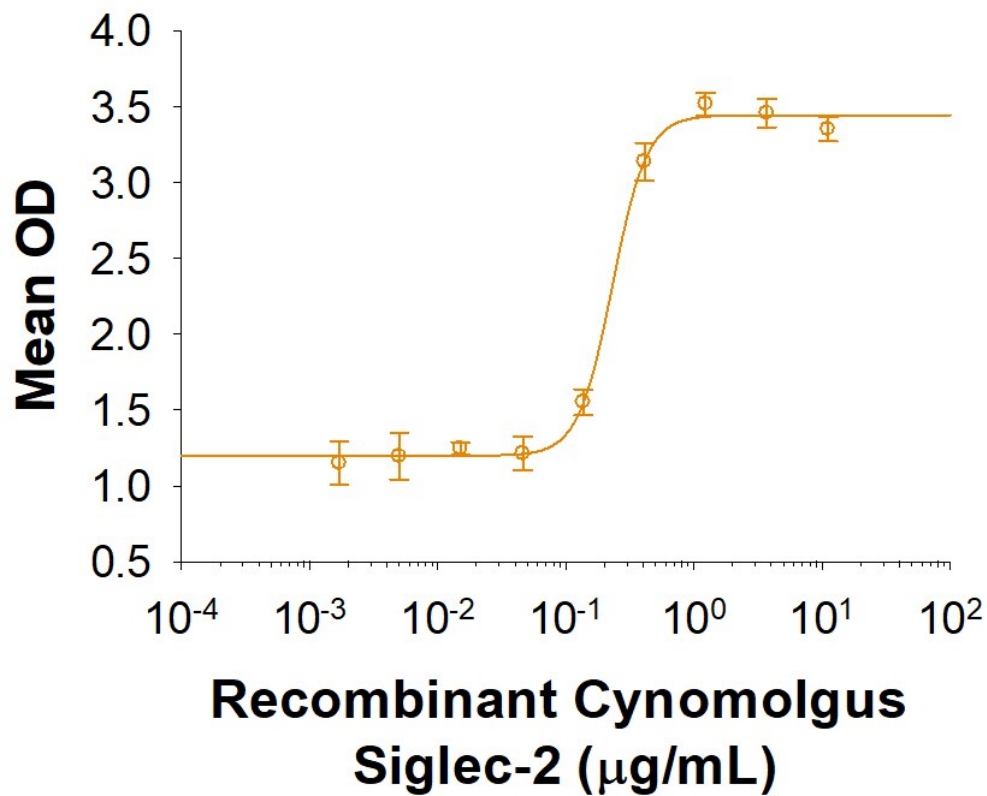
Recombinant Monkey CD22 Protein (Asp20-Arg687), C-hFc-tagged

Product Information

Cat	IMP-10271
Official Symbol	CD22
Product Overview	Recombinant Cynomolgus Siglec-2/CD22 Fc Chimera protein (Asp20-Arg687) with a Human IgG1 (Pro100-Lys330) Fc tag at C-terminus was expressed in Human embryonic kidney cell.
Description	Predicted to enable CD4 receptor binding activity; protein phosphatase binding activity; and sialic acid binding activity. Involved in B cell activation; negative regulation of B cell receptor signaling pathway; and regulation of endocytosis. Located in early endosome and recycling endosome.
Expression System	HEK293
Species	Monkey
Tag	C-hFc
Predicted N Terminal	Asp20
Form	Lyophilized from a 0.2 μ m filtered solution in PBS with Trehalose.
Molecular Mass	Predicted Molecular Mass: 102 kDa SDS-PAGE: 115-134 kDa, reducing conditions
Protein length	Asp20-Arg687
Bio-activity	Measured by the ability of the immobilized protein to support the adhesion of human red blood cells. The ED50 for this effect is 0.07-0.42 μ g/mL.
Endotoxin	
Purity	>95%, by SDS-PAGE visualized with Silver Staining and quantitative densitometry by Coomassie Blue Staining.
Notes	Disulfide-linked homodimer
Storage	Use a manual defrost freezer and avoid repeated freeze-thaw cycles. 12 months from date of receipt, -20 to -70 centigrade as supplied. 1 month, 2 to 8 centigrade under sterile conditions after reconstitution. 3 months, \leq -20 centigrade under sterile conditions after reconstitution.
Reconstitution	Reconstitute at 250 μ g/mL in PBS.
SDS-PAGE	



Bioactivity-ELISA 1



Measured by the ability of the immobilized protein to support the adhesion of human red blood cells. The ED50 for this effect is 0.07-0.42 µg/mL.