

# Recombinant Human NECTIN1 Protein (Gly32-Ser349), C-hFc-tagged

## Product Information

---

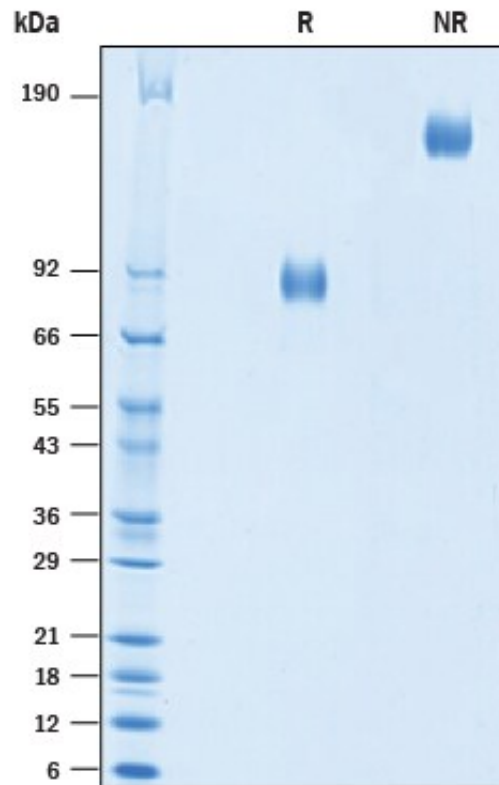
<b>Cat</b>	IMP-9620
<b>Official Symbol</b>	NECTIN1
<b>Product Overview</b>	Recombinant human Nectin-1 protein (Gly32-Ser349) with a Human IgG1 (Pro100-Lys330) Fc tag at C-terminus was expressed in Human embryonic kidney cell.
<b>Description</b>	<i>This gene encodes an adhesion protein that plays a role in the organization of adherens junctions and tight junctions in epithelial and endothelial cells. The protein is a calcium(2+)-independent cell-cell adhesion molecule that belongs to the immunoglobulin superfamily and has 3 extracellular immunoglobulin-like loops, a single transmembrane domain (in some isoforms), and a cytoplasmic region. This protein acts as a receptor for glycoprotein D (gD) of herpes simplex viruses 1 and 2 (HSV-1, HSV-2), and pseudorabies virus (PRV) and mediates viral entry into epithelial and neuronal cells. Mutations in this gene cause cleft lip and palate/ectodermal dysplasia 1 syndrome (CLPED1) as well as non-syndromic cleft lip with or without cleft palate (CL/P). Alternative splicing results in multiple transcript variants encoding proteins with distinct C-termini.</i>
<b>Expression System</b>	HEK293
<b>Species</b>	Human
<b>Tag</b>	C-hFc
<b>Predicted N Terminal</b>	Gln31, inferred from enzymatic deblocking revealing Val32
<b>Form</b>	Lyophilized from a 0.2 µm filtered solution in PBS.
<b>Molecular Mass</b>	Predicted Molecular Mass: 83 kDa SDS-PAGE: 78-88 kDa, under reducing conditions
<b>Protein length</b>	Gly32-Ser349
<b>Bio-activity</b>	Measured by the ability of the immobilized protein to support the adhesion of NIH-3T3 mouse embryonic fibroblast cells. The ED50 for this effect is 0.35-4.20 µg/mL.
<b>Endotoxin</b>	
<b>Purity</b>	>95%, by SDS-PAGE visualized with Silver Staining and quantitative densitometry by Coomassie Blue Staining.
<b>Notes</b>	Disulfide-linked homodimer

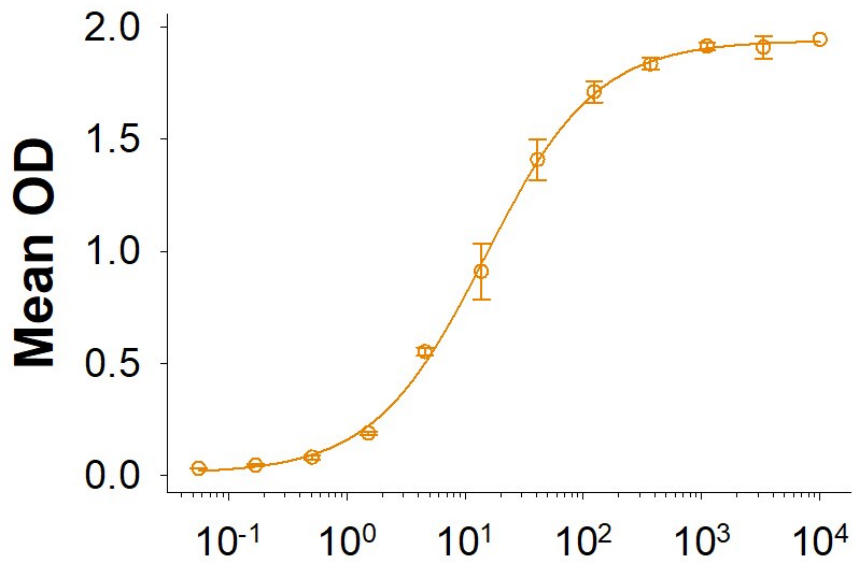
**Storage**

Use a manual defrost freezer and avoid repeated freeze-thaw cycles. 12 months from date of receipt, -20 to -70 centigrade as supplied. 1 month, 2 to 8 centigrade under sterile conditions after reconstitution. 3 months, -20 to -70 centigrade under sterile conditions after reconstitution.

**Reconstitution**

Reconstitute at 500 µg/mL in PBS.

**SDS-PAGE****Bioactivity-ELISA 1**



## Recombinant Human Nectin-1 (ng/mL)

*Measured by the ability of the immobilized protein to support the adhesion of NIH-3T3 mouse embryonic fibroblast cells. The ED50 for this effect is 0.35-4.20 µg/mL.*