

Recombinant Monkey FGL1 Protein (Ala63-Ile348), N-hFc-tagged

Product Information

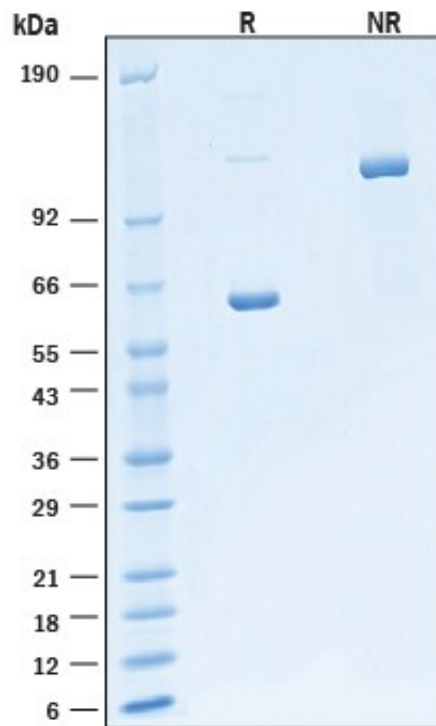
Cat	IMP-9647
Official Symbol	FGL1
Product Overview	Recombinant Cynomolgus/Rhesus Hepassocin/FGL1 Fc protein (Ala63-Ile348) with a Human IgG1 Fc (Pro100-Lys330) tag at N-terminus was expressed in Chinese Hamster Ovary cell line.
Description	Fibrinogen-like 1 is a member of the fibrinogen family. This protein is homologous to the carboxy terminus of the fibrinogen beta- and gamma-subunits which contains the four conserved cysteines of fibrinogens and fibrinogen related proteins. However, this protein lacks the platelet-binding site, cross-linking region and a thrombin-sensitive site which are necessary for fibrin clot formation. This protein may play a role in the development of hepatocellular carcinomas. Four alternatively spliced transcript variants encoding the same protein exist for this gene.
Expression System	CHO
Species	Monkey
Tag	N-hFc
Predicted N Terminal	Met (of Fc)
Form	Lyophilized from a 0.2 µm filtered solution in PBS, NaCl and Glycerol with Trehalose.
Molecular Mass	Predicted Molecular Mass: 60 kDa SDS-PAGE: 58-65 kDa, under reducing conditions.
Protein length	Ala63-Ile348
Bio-activity	Measured by its binding ability in a functional ELISA. When Recombinant Human LAG-3 Fc Chimera Protein is immobilized at 2.50 µg/mL, 100 µL/well, Recombinant Cynomolgus Monkey/Rhesus Macaque Hepassocin/FGL1 Fc Chimera binds with an ED50 of 0.500-4.00 µg/mL.
Endotoxin	
Purity	>95%, by SDS-PAGE visualized with Silver Staining and quantitative densitometry by Coomassie Blue Staining.
Notes	Disulfide-linked homodimer
Storage	Use a manual defrost freezer and avoid repeated freeze-thaw cycles. 12 months from date of receipt, -20 to -70 centigrade as supplied. 1 month, 2 to 8 centigrade under sterile conditions after reconstitution. 3 months, -20 to

-70 centigrade under sterile conditions after reconstitution.

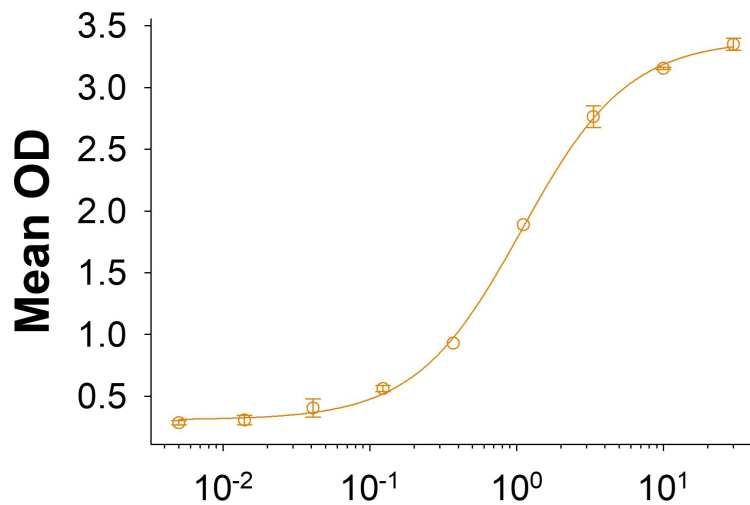
Reconstitute at 250 µg/mL in PBS.

Reconstitution

SDS-PAGE



Bioactivity-ELISA 1



Recombinant Cynomolgus Monkey/ Rhesus Macaque Hepassocin/FGL1 (µg/mL)

Measured by its binding ability in a functional ELISA. When Recombinant Human LAG-3 Fc Chimera Protein is immobilized at 2.50 µg/mL, 100 µL/well, Recombinant Cynomolgus Monkey/Rhesus Macaque Hepassocin/FGL1 Fc Chimera binds with an ED50 of 0.500-4.00 µg/mL.