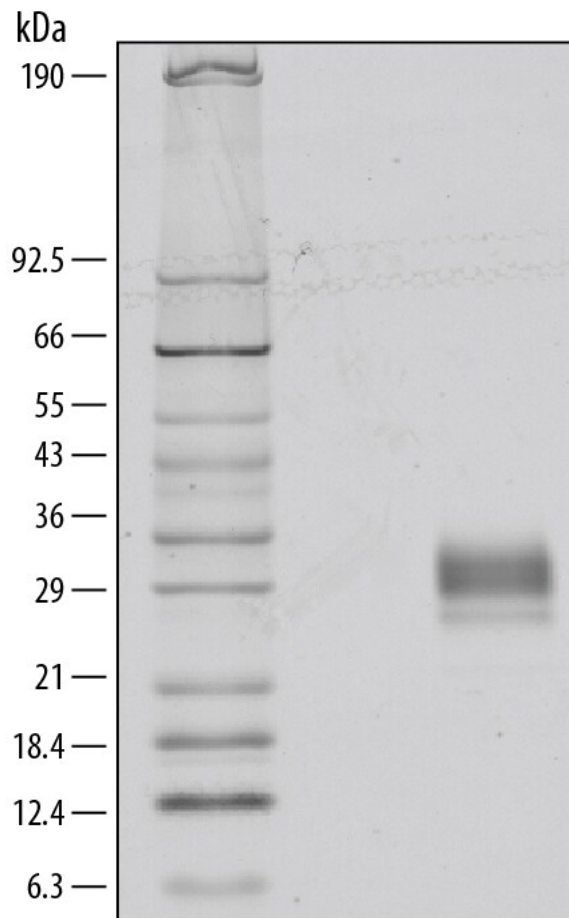


# Recombinant Human FCGR2B Protein (Ala46-Pro217), C-10×His-tagged

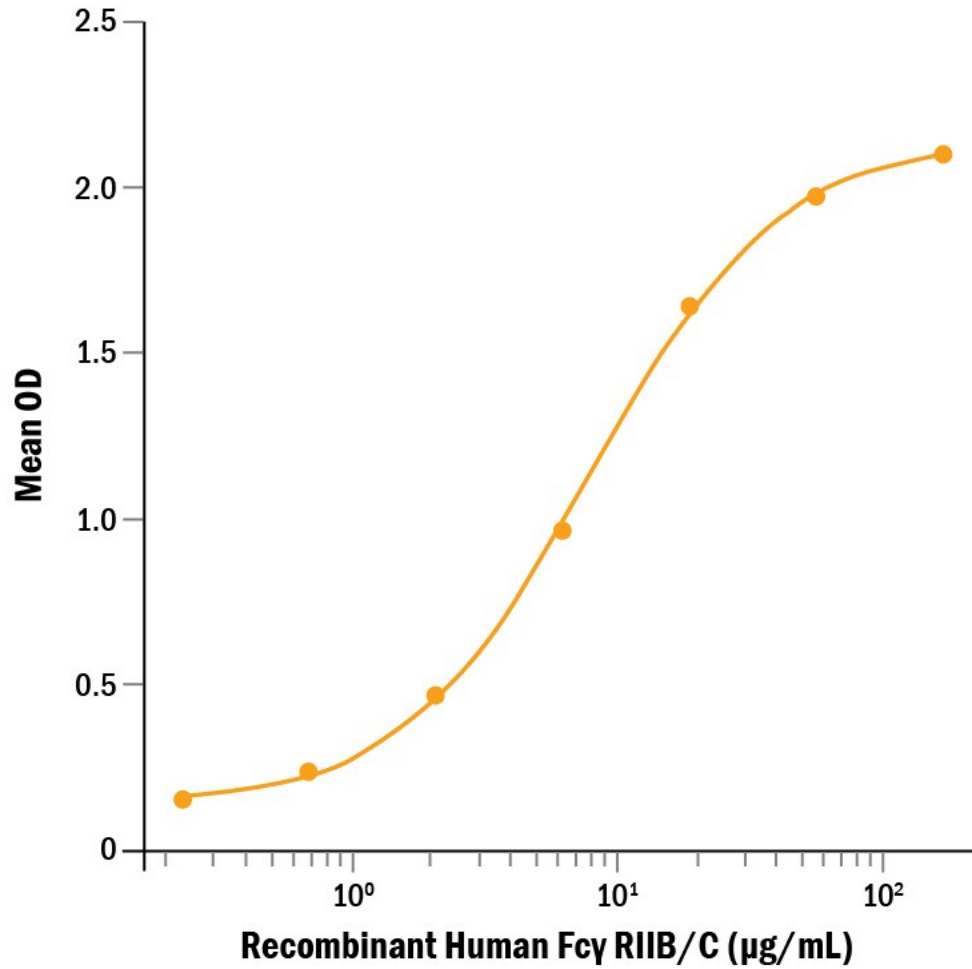
## Product Information

---

<b>Cat</b>	IMP-9703
<b>Official Symbol</b>	FCGR2B
<b>Product Overview</b>	Recombinant human Fc gamma RIIB/C (CD32b/c) protein (Ala46-Pro217) with a C-terminal 10-His tag was expressed in Mouse myeloma cell line.
<b>Description</b>	The protein encoded by this gene is a low affinity receptor for the Fc region of immunoglobulin gamma complexes. The encoded protein is involved in the phagocytosis of immune complexes and in the regulation of antibody production by B-cells. Variations in this gene may increase susceptibility to systemic lupus erythematosus (SLE). Several transcript variants encoding different isoforms have been found for this gene.
<b>Expression System</b>	Mouse myeloma cell line
<b>Species</b>	Human
<b>Tag</b>	C-10×His
<b>Predicted N Terminal</b>	Ala46
<b>Form</b>	Lyophilized from a 0.2 µm filtered solution in PBS.
<b>Molecular Mass</b>	Predicted Molecular Mass: 21 kDa SDS-PAGE: 25-35 kDa, reducing conditions
<b>Protein length</b>	Ala46-Pro217
<b>Bio-activity</b>	Measured by its ability to bind human IgG with an estimated Kd
<b>Endotoxin</b>	
<b>Purity</b>	>95%, by SDS-PAGE visualized with Silver Staining and quantitative densitometry by Coomassie Blue Staining.
<b>Storage</b>	Use a manual defrost freezer and avoid repeated freeze-thaw cycles. 12 months from date of receipt, -20 to -70 centigrade as supplied. 1 month, 2 to 8 centigrade under sterile conditions after reconstitution. 3 months, -20 to -70 centigrade under sterile conditions after reconstitution.
<b>Reconstitution</b>	Reconstitute at 100 µg/mL in sterile PBS.
<b>SDS-PAGE</b>	



**Bioactivity-ELISA 1**



*Measured by its ability to bind human IgG with an estimated  $K_d$*