

Recombinant Human/Mouse/Rat MSTN Protein (Asp268-Ser37)

Product Information

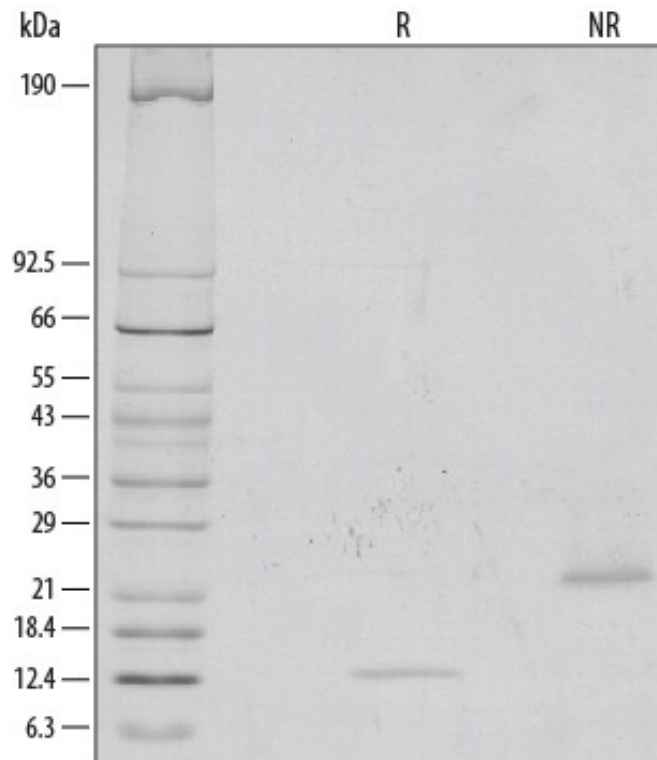
Cat	<i>IMP-9899</i>
Official Symbol	<i>MSLN</i>
Product Overview	<i>Recombinant Human/Mouse/Rat GDF-8/Myostatin protein (Asp268-Ser376) without tag was expressed in Mouse myeloma cell line.</i>
Description	<i>This gene encodes a secreted ligand of the TGF-beta (transforming growth factor-beta) superfamily of proteins. Ligands of this family bind various TGF-beta receptors leading to recruitment and activation of SMAD family transcription factors that regulate gene expression. The encoded preproprotein is proteolytically processed to generate each subunit of the disulfide-linked homodimer. This protein negatively regulates skeletal muscle cell proliferation and differentiation. Mutations in this gene are associated with increased skeletal muscle mass in humans and other mammals.</i>
Expression System	<i>Mouse myeloma cell line</i>
Species	<i>Human/Mouse/Rat</i>
Tag	<i>Tag Free</i>
Predicted N Terminal	<i>Asp268</i>
Form	<i>Lyophilized from a 0.2 µm filtered solution in Acetonitrile and TFA with BSA as a carrier protein. *1 mg pack size (01M) is supplied as a 0.2 µm filtered solution in Acetonitrile and TFA with BSA as a carrier protein.</i>
Molecular Mass	<i>Predicted Molecular Mass: 12.4 kDa SDS-PAGE: 12 kDa, reducing conditions, 24 kDa, non-reducing conditions</i>
Protein length	<i>Asp268-Ser37</i>
Bio-activity	<i>Measured by its ability to induce hemoglobin expression in K562 human chronic myelogenous leukemia cells. Schwall, R.H. et al. (1991) Method Enzymol. 198:340. The ED50 for this effect is 2-10 ng/mL.</i>
Endotoxin	
Purity	<i>>90%, by SDS-PAGE visualized with Silver Staining and quantitative densitometry by Coomassie Blue Staining.</i>
Notes	<i>Disulfide-linked homodimer</i>
Storage	<i>Use a manual defrost freezer and avoid repeated freeze-thaw cycles. 12 months from date of receipt, -20 to -70 centigrade as supplied. 1 month, 2 to 8 centigrade under sterile conditions after reconstitution. 3 months, -20 to</i>

-70 centigrade under sterile conditions after reconstitution.

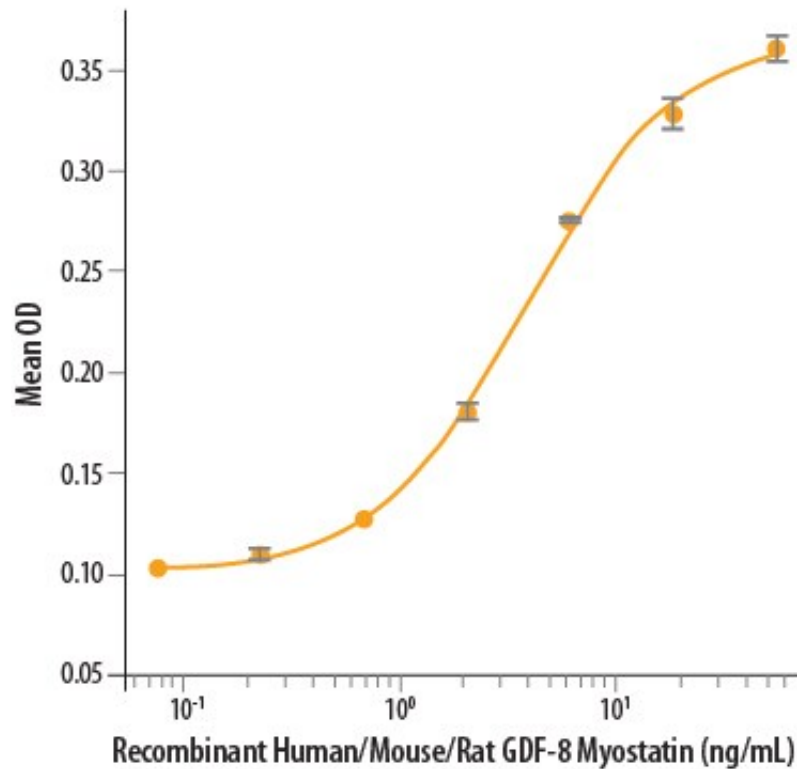
Reconstitution

Reconstitute at 100 µg/mL in sterile 4 mM HCl containing at least 0.1% human or bovine serum albumin.

SDS-PAGE



Bioactivity-ELISA 1



Measured by its ability to induce hemoglobin expression in K562 human chronic myelogenous leukemia cells. Schwall, R.H. et al. (1991) Method Enzymol. 198:340. The ED50 for this effect is 2-10 ng/mL.