

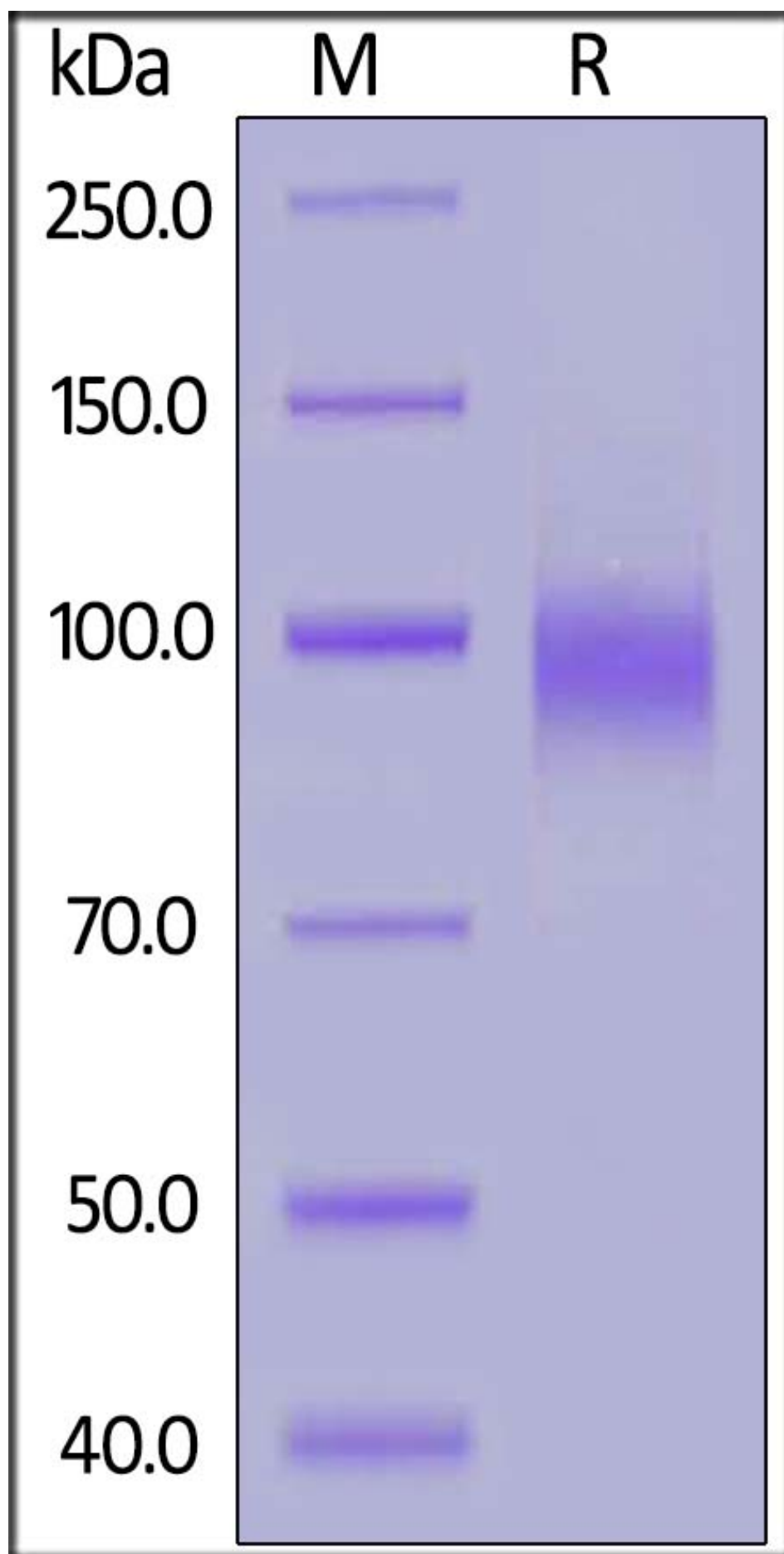
# Recombinant Human TNF protein, C-His Tag

## Product Information

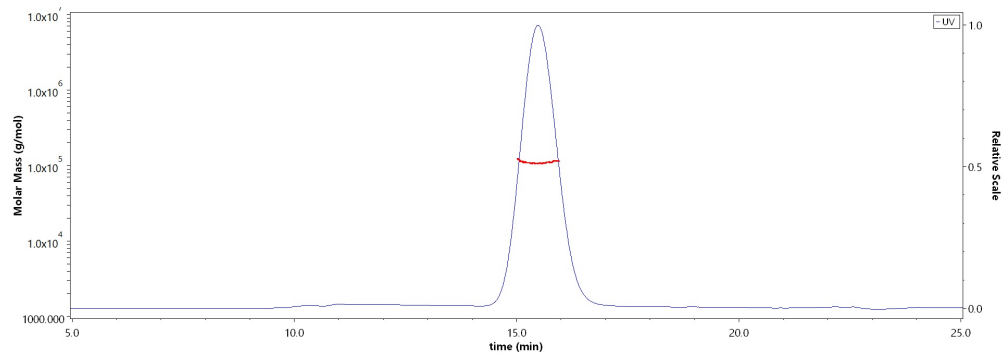
---

<b>Cat</b>	<i>IMP-612</i>
<b>Official Symbol</b>	<i>TNF</i>
<b>Product Overview</b>	<i>Recombinant Human TNF protein(NP_000585.2)(Leu 25-Ser 645), fused to C-His Tag, was expressed in HEK293.</i>
<b>Expression System</b>	<i>HEK293</i>
<b>Species</b>	<i>Human</i>
<b>Tag</b>	<i>C-His Tag</i>
<b>Form</b>	<i>Lyophilized from 0.22 µm filtered solution in PBS, pH7.4. Normally trehalose is added as protectant before lyophilization.</i>
<b>Molecular Mass</b>	<i>The protein has a calculated MW of 70.5kDa. The protein migrates as 95-120 kDa under reducing (R) condition (SDS-PAGE) due to glycosylation.</i>
<b>Protein length</b>	<i>Leu 25-Ser 645</i>
<b>Endotoxin</b>	<i>Less than 1.0 EU per µg by the LAL method.</i>
<b>Purity</b>	<i>&gt;95% as determined by SDS-PAGE. &gt;90% as determined by SEC-MALS.</i>
<b>Storage</b>	<i>For long term storage, the product should be stored at lyophilized state at -20°C or lower. Please avoid repeated freeze-thaw cycles. This product is stable after storage at: -20°C to -70°C for 12 months in lyophilized state; -70°C for 12 months under sterile conditions after reconstitution.</i>
<b>Reconstitution</b>	<i>It is recommended that sterile water be added to the vial to prepare a stock solution of 0.2 ug/ul. Centrifuge the vial at 4°C before opening to recover the entire contents.</i>

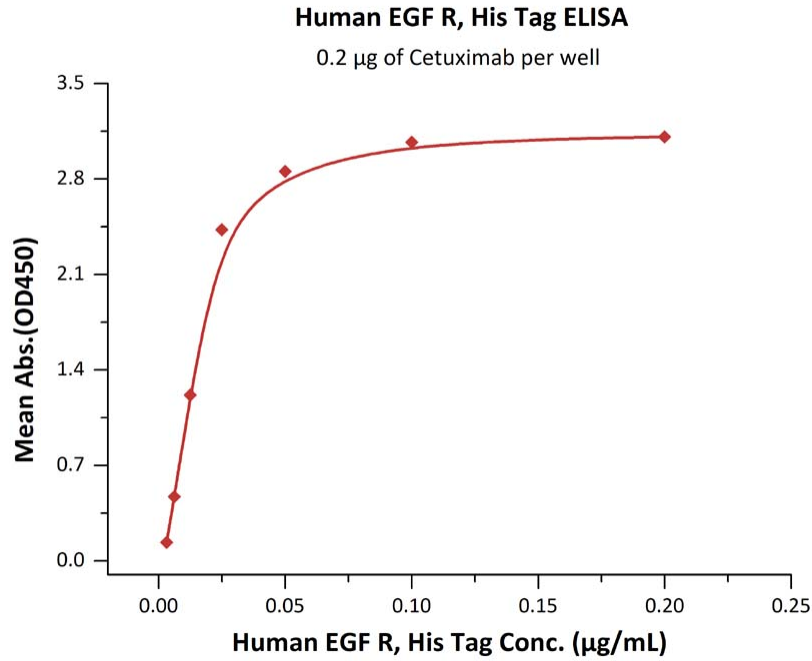
## **SDS-PAGE**



**SEC-MALS 1**

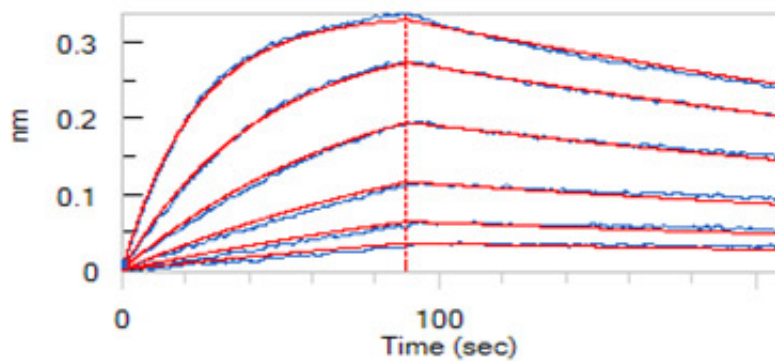


**Bioactivity-ELISA 1**



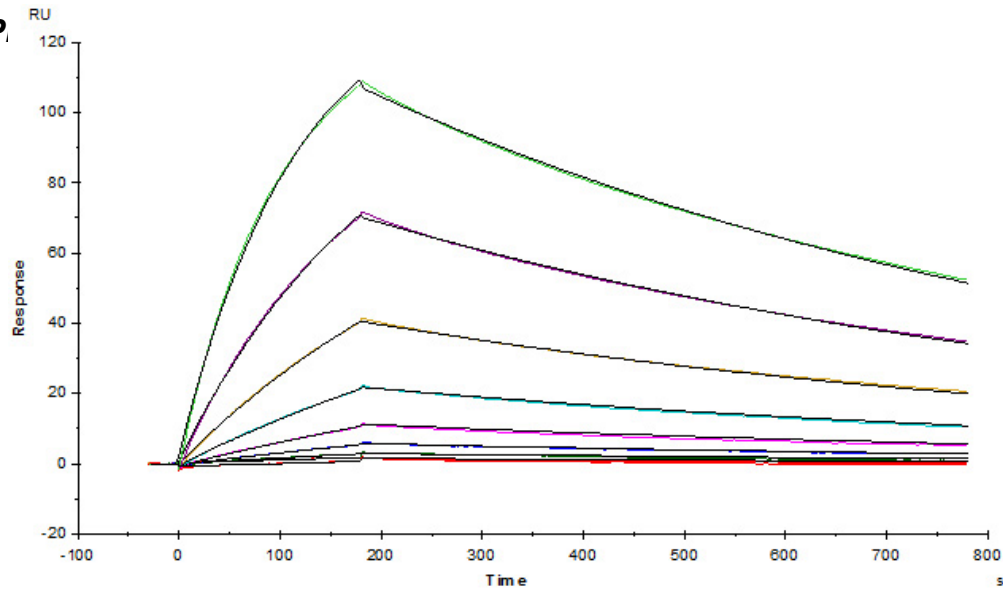
***Immobilized Cetuximab at 2 µg/mL (100 µL/well) can bind Human EGF R, His Tag with a linear range of 0.006-0.025 µg/mL.***

**Bioactivity-BLI 1**



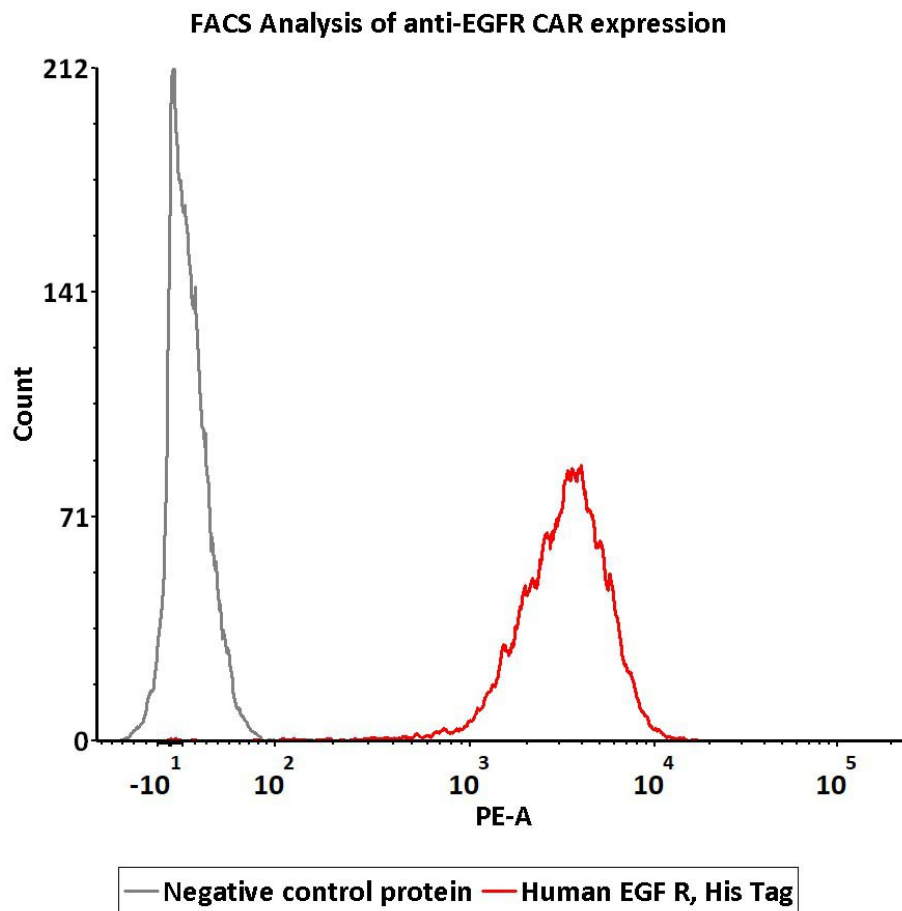
***Loaded Erbitux (Cetuximab) on AHC Biosensor, can bind Human EGF R, His Tag with an affinity constant of 1.23 nM as determined in BLI assay.***

**Bioactivity-SP1**



***Erbbitux (Cetuximab) captured on CM5 chip via anti-human IgG Fc antibodies surface, can bind Human EGF R, His Tag with an affinity constant of 1.3 nM as determined in a SPR assay.***

**Bioactivity-FACS 1**



***2e5 of Anti-EGFR CAR-293 cells were stained with 100  $\mu$ L of 1  $\mu$ g/mL of Human EGF R, His Tag and negative control protein respectively, washed and then followed by PE anti-His antibody and analyzed with FACS.***