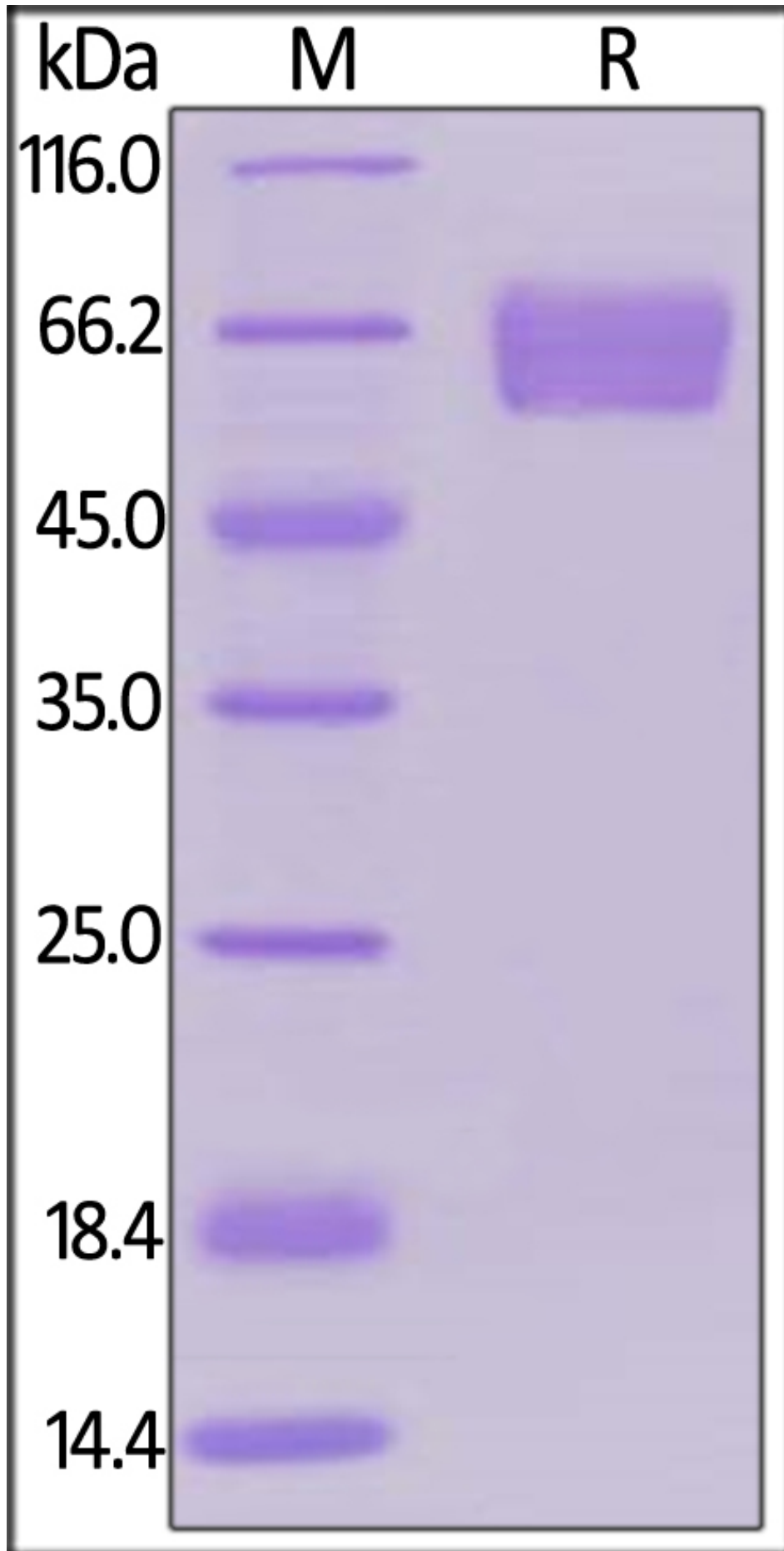


Recombinant Human PDCD1 protein, C-Llama IgG2b Fc Tag

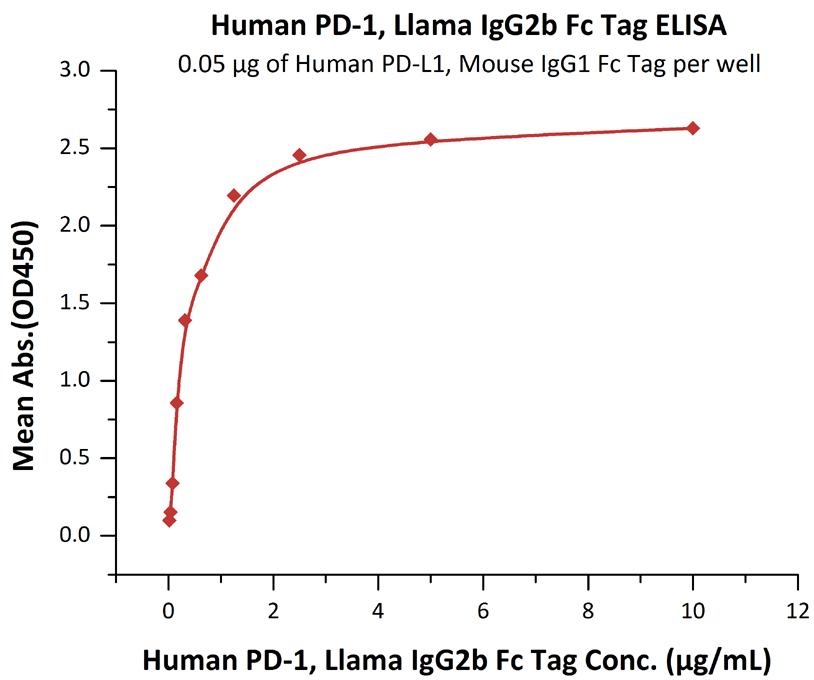
Product Information

Cat	IMP-626
Official Symbol	PDCD1
Product Overview	Recombinant Human PDCD1 protein(NP_005009.2)(Leu 25-Gln 167), fused to C-Llama IgG2b Fc Tag, was expressed in HEK293.
Expression System	HEK293
Species	Human
Tag	C-Llama IgG2b Fc Tag
Form	Lyophilized from 0.22 μ m filtered solution in Tris with Glycine, Arginine and NaCl, pH7.5. Normally trehalose is added as protectant before lyophilization.
Molecular Mass	The protein has a calculated MW of 43.8 kDa. The protein migrates as 55-75 kDa under reducing (R) condition (SDS-PAGE) due to glycosylation.
Protein length	Leu 25-Gln 167
Endotoxin	Less than 0.01 EU per μ g by the LAL method.
Purity	>95% as determined by SDS-PAGE.
Storage	For long term storage, the product should be stored at lyophilized state at -20°C or lower. Please avoid repeated freeze-thaw cycles. This product is stable after storage at: -20°C to -70°C for 12 months in lyophilized state; -70°C for 3 months under sterile conditions after reconstitution.
Reconstitution	It is recommended that sterile water be added to the vial to prepare a stock solution of 0.2 ug/ul. Centrifuge the vial at 4°C before opening to recover the entire contents.

SDS-PAGE

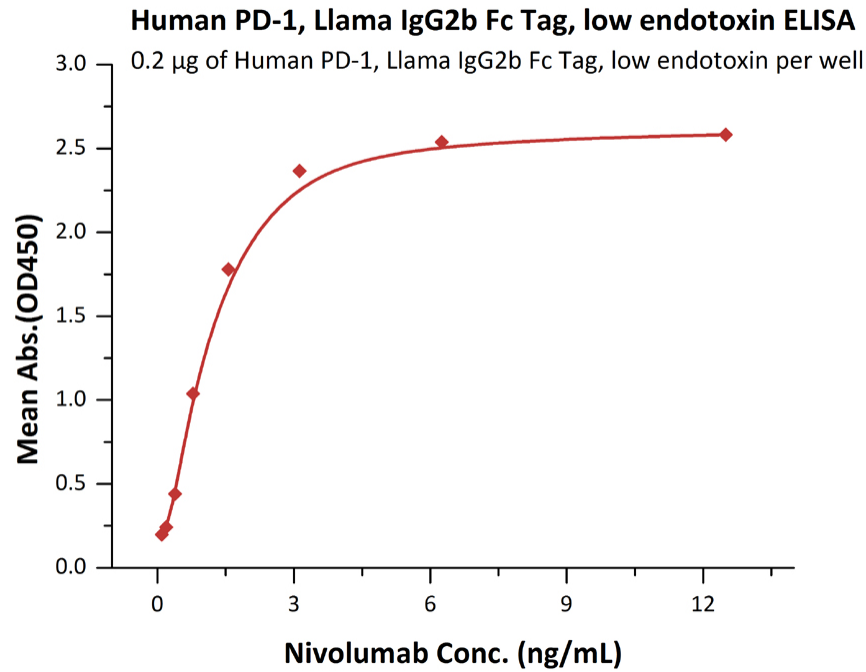


Bioactivity-ELI



Immobilized Human PD-L1, Mouse IgG1 Fc Tag at 0.5 µg/mL (100 µL/well) can bind Human PD-1, Llama IgG2b Fc Tag, low endotoxin with a linear range of 20-313 ng/mL.

Bioactivity-ELISA 2



Immobilized Human PD-1, Llama IgG2b Fc Tag, low endotoxin at 2 μ g/mL (100 μ L/well) can bind Nivolumab with a linear range of 0.1-2 ng/mL.