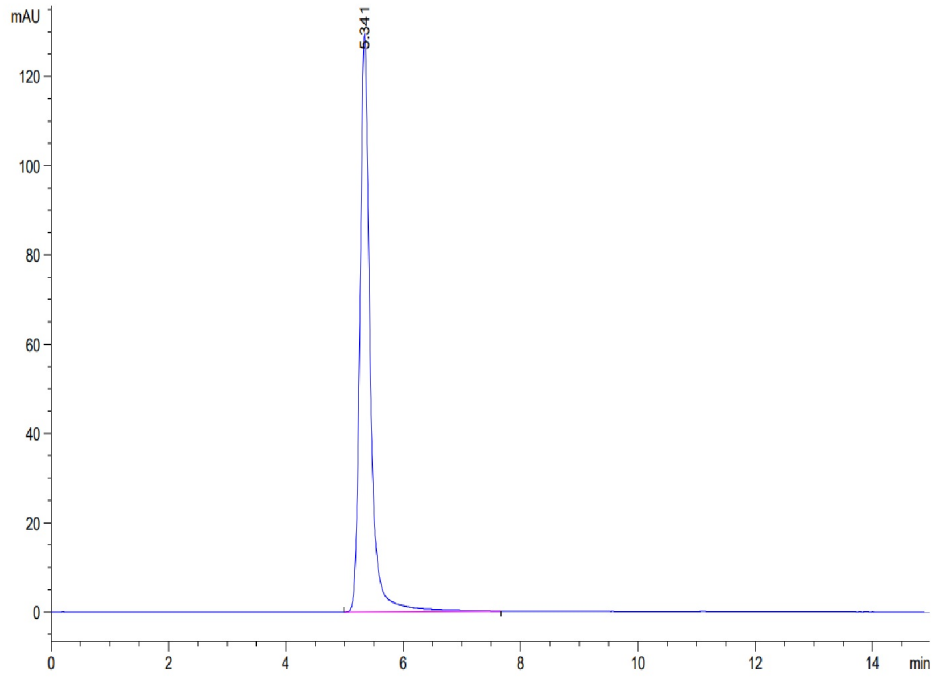


Recombinant Human CLDN6 protein(VLPs)

Product Information

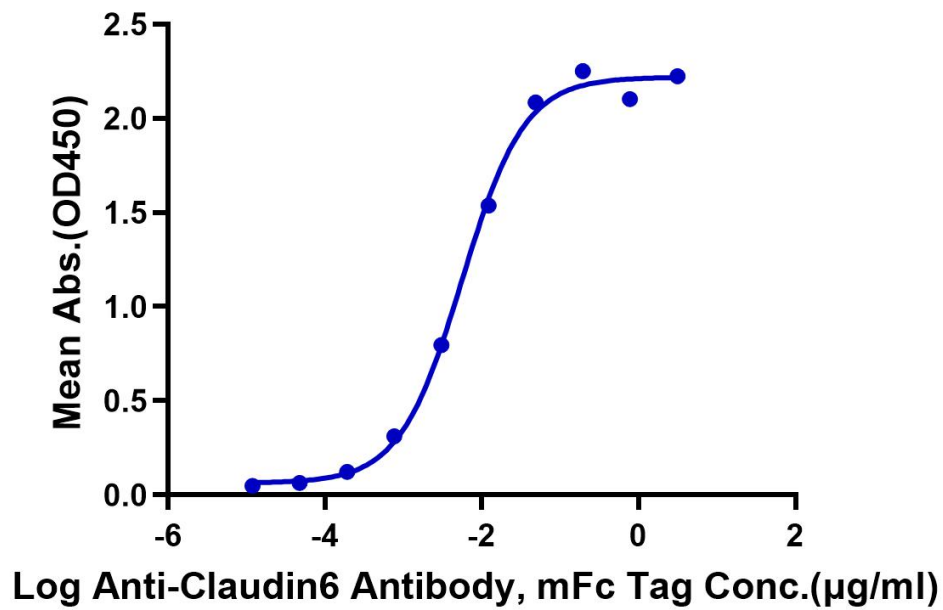
Cat	<i>IMP-1508</i>
Official Symbol	<i>CLDN6</i>
Product Overview	<i>Recombinant Human CLDN6 protein(P56747)(Met1-Val220) was expressed in HEK293.</i>
Expression System	<i>HEK293</i>
Species	<i>Human</i>
Tag	<i>N/A</i>
Form	<i>Supplied as 0.22µm filtered solution in PBS (pH 7.4).</i>
Molecular Mass	<i>The protein has a predicted MW of 24.5 kDa.</i>
Protein length	<i>Met1-Val220</i>
Endotoxin	<i>Less than 1EU per µg by the LAL method.</i>
Purity	<i>> 95% as determined by HPLC</i>
Storage	<i>The product should be stored at -70°C. Please do not repeated freeze-thaw cycles.</i>
Reconstitution	<i>It is recommended that sterile water be added to the vial to prepare a stock solution of 0.2 ug/ul. Centrifuge the vial at 4°C before opening to recover the entire contents.</i>
HPLC	



Bioactivity-ELISA 1

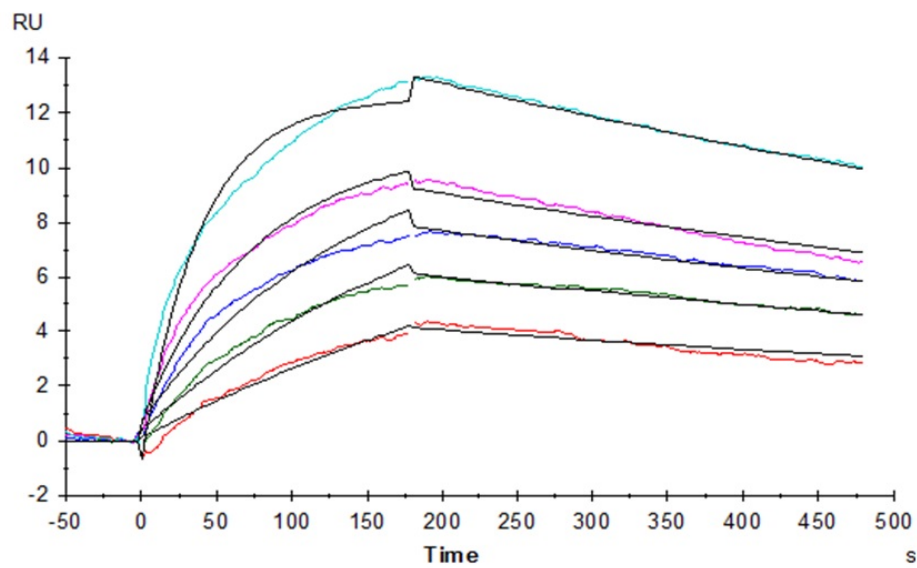
Human Claudin6 VLP ELISA

0.5µg Human Claudin6 VLP Per Well



Immobilized Human Claudin 6 VLP at 5µg/ml (100µl/Well). Dose response curve for Anti-Claudin 6 Antibody, mFc Tag with the EC50 of 5.6ng/ml determined by ELISA.

Bioactivity-SPR 1



Human Claudin 6 VLP, Amine coupling on CM5 Chip, Anti-Claudin 6 Antibody as analyte; The affinity constant of 1.94nM as determined in SPR assay (Biacore T200).