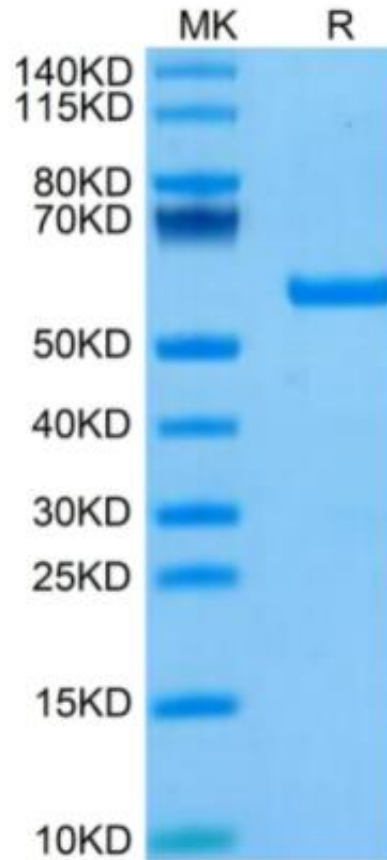


# Recombinant Human HLA-A Complex protein(KRAS G12V), C-His-Avi Tag, Biotinylated

## Product Information

---

<b>Cat</b>	IMP-1658
<b>Official Symbol</b>	HLA-A
<b>Product Overview</b>	Recombinant Human HLA-A Complex protein(KRAS G12V)(AAV53343.1(HLA-A*11:01)&P61769(B2M)&VVGAVGVGK)(Gly25-Thr305(HLA-A*11:01),Ile21-Met119(B2M) and VVGAVGVGK peptide) is expressed from Expi293 with His tag and Avi tag at the C-terminal.
<b>Expression System</b>	HEK293
<b>Species</b>	Human
<b>Tag</b>	C-His-Avi Tag
<b>Form</b>	Lyophilized from 0.22µm filtered solution in PBS (pH 7.4). Normally 8% trehalose is added as protectant before lyophilization.
<b>Molecular Mass</b>	The protein has a predicted MW of 50.2 kDa. Due to glycosylation, the protein migrates to 56-65 kDa based on Tris-Bis PAGE result.
<b>Protein length</b>	It contains Gly25-Thr305(HLA-A*11:01),Ile21-Met119(B2M) and VVGAVGVGK peptide.
<b>Endotoxin</b>	Less than 1EU per µg by the LAL method.
<b>Purity</b>	> 95% as determined by Tris-Bis PAGE > 95% as determined by HPLC
<b>Storage</b>	-20 to -80°C for 12 months as supplied from date of receipt. '-20 to -80°C for 3-6 months in unopened state after reconstitution. 4-8□ for 2-7 days after reconstitution. Recommend to aliquot the protein into smaller quantities for optimal storage. Please avoid freeze-thaw cycles.U17
<b>Reconstitution</b>	Centrifuge tubes before opening. Reconstituting to a concentration more than 100 µg/ml is recommended (usually we use 1mg/ml solution for lyophilization). Dissolve the lyophilized protein in distilled water.
<b>SDS-PAGE</b>	



## **HPLC**

