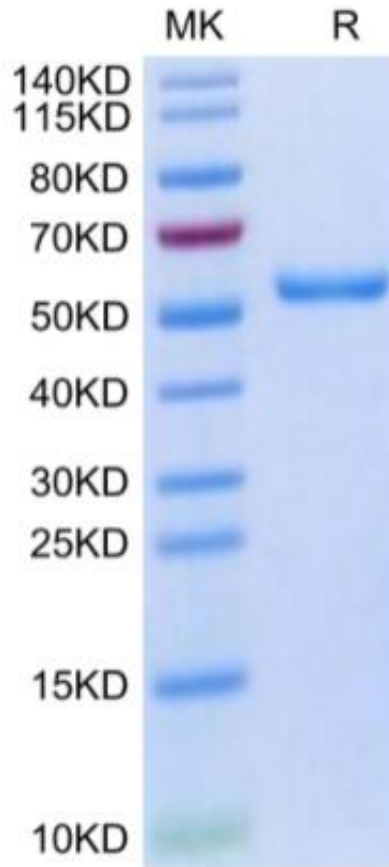


# Recombinant Human HLA-A protein(HPV16 E7), C-His-Avi Tag

## Product Information

---

<b>Cat</b>	IMP-1674
<b>Official Symbol</b>	HLA-A
<b>Product Overview</b>	Recombinant Human HLA-A protein(HPV16 E7)(P04439-1(HLA-A*02:01)&P61769(B2M)&YMLDLQPET peptide)(Gly25-Thr305(HLA-A*02:01),Ile21-Met119(B2M) and YMLDLQPET peptide) is expressed from Expi293 with His tag and Avi tag at the C-terminal.
<b>Expression System</b>	HEK293
<b>Species</b>	Human
<b>Tag</b>	C-His-Avi Tag
<b>Form</b>	Supplied as 0.22µm filtered solution in PBS (pH 7.4). Please dilute to the desired concentration according to the concentration of the solution shown on the product label.
<b>Molecular Mass</b>	The protein has a predicted MW of 50.50 kDa. Due to glycosylation, the protein migrates to 53-63 kDa based on Tris-Bis PAGE result.
<b>Protein length</b>	It contains Gly25-Thr305(HLA-A*02:01),Ile21-Met119(B2M) and YMLDLQPET peptide.
<b>Endotoxin</b>	Less than 1EU per µg by the LAL method.
<b>Purity</b>	> 95% as determined by Tris-Bis PAGE > 95% as determined by HPLC
<b>Storage</b>	Valid for 12 months from date of receipt when stored at -80°C. Recommend to aliquot the protein into smaller quantities for optimal storage. Please do not repeated freeze-thaw cycles.
<b>Reconstitution</b>	It is recommended that sterile water be added to the vial to prepare a stock solution of 0.2 ug/ul. Centrifuge the vial at 4°C before opening to recover the entire contents.
<b>SDS-PAGE</b>	



**HPLC**

