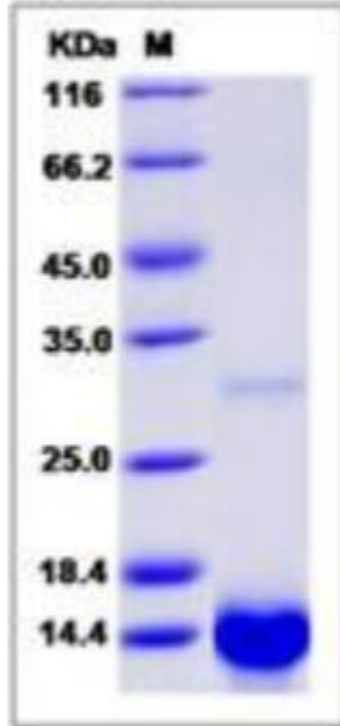


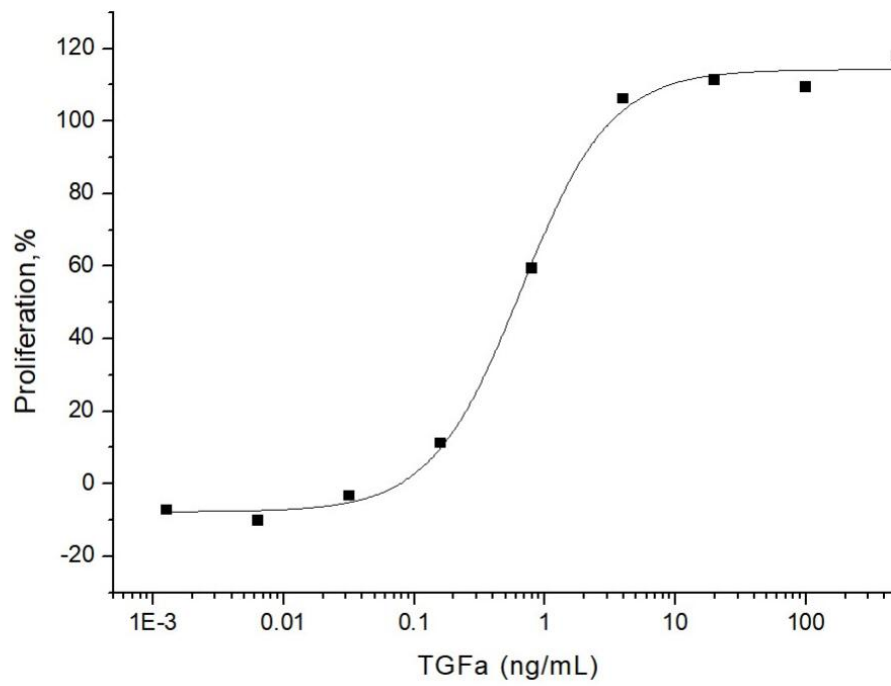
Recombinant Human TGFA Protein, No Tag

Product Information

Cat	IMP-4969
Official Symbol	TGFA
Product Overview	Recombinant human TGF α (P01135-1) (Val40-Ala89) was expressed and purified.
Description	<p>The miR-137 served as a tumor suppressor in non-small cell lung cancer (NSCLC) and its suppressive effect is mediated by repressing TGFA expression. TGFA gene expression was significantly higher in tumor tissues compared to adjacent normal tissue and high TGFA gene expression strongly correlated with poor survival in patients with lung adenocarcinoma, and miR-374a suppresses lung adenocarcinoma cell proliferation and invasion via targeting TGFA gene expression. Transforming growth factor alpha (TGFA) is a well-characterized mammalian growth factor that might contribute to the development of Cleft lip and palate (CL/P).</p>
Expression System	<i>E. coli</i>
Species	Human
Tag	No Tag
Predicted N Terminal	Met
Form	Lyophilized from sterile 50 mM Tris, 100 mM NaCl, pH 8.0, 5 % trehalose, 5% mannitol and 0.01% Tween80.
Molecular Mass	The recombinant human TGF α consists of 50 amino acids and has a predicted molecular mass of 5.6 kDa. The apparent molecular mass of it is approximately 13 kDa in SDS-PAGE under reducing conditions.
Protein length	Val40-Ala89
Endotoxin	Please contact us for more information.
Purity	> 90 % as determined by SDS-PAGE
Storage	Samples are stable for up to twelve months from date of receipt at -20 to -80 centigrade. Store it under sterile conditions at -20 to -80 centigrade. It is recommended that the protein be aliquoted for optimal storage. Avoid repeated freeze-thaw cycles.
Reconstitution	A hardcopy of COA with reconstitution instruction is sent along with the products. Please refer to it for detailed information.
SDS-PAGE	

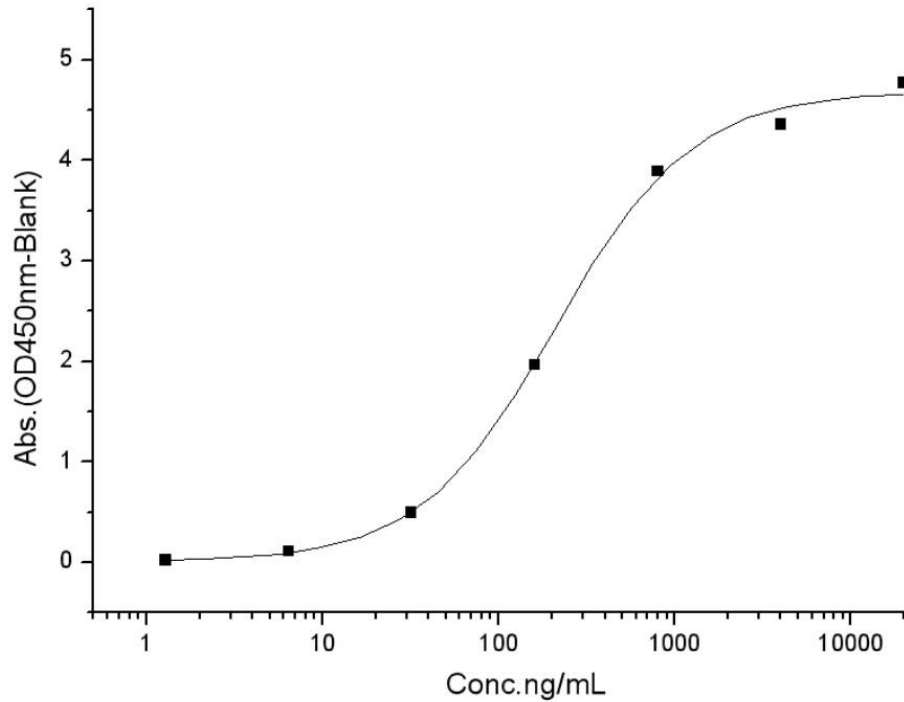


Bioactivity-ELISA 1



Measured in a cell proliferation assay using Balb/c 3T3 mouse embryonic fibroblast cells. The ED50 for this effect is 0.5-2.5 ng/mL.

Bioactivity-ELISA 2



Measured by its binding ability in a functional ELISA. Immobilized human TGF-alpha at 2 μ g/mL (100 μ L/well) can bind Human EGFR hFc, the EC50 of Human EGFR hFc is 80-500 ng/mL.