

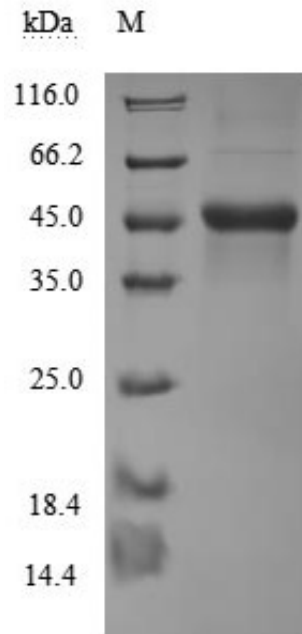
# Recombinant Human CD40LG protein, N-hFc-Flag Tag

## Product Information

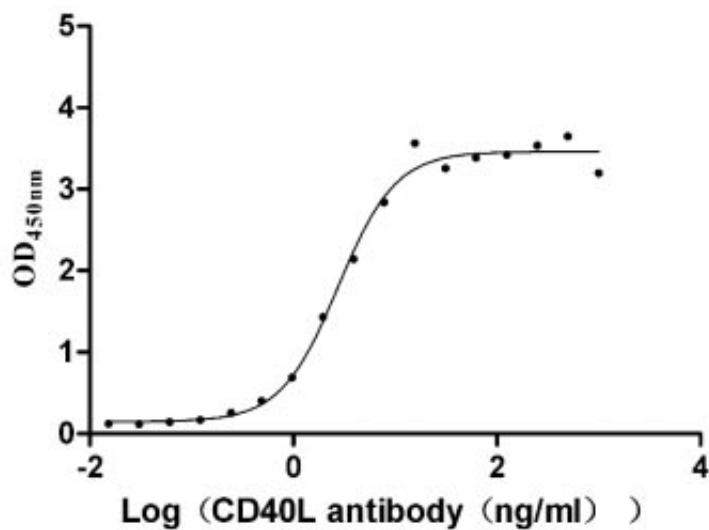
---

<b>Cat</b>	IMP-6020
<b>Official Symbol</b>	CD40LG
<b>Product Overview</b>	Recombinant Human CD40LG protein(P29965)(13-261aa), fused with N-terminal hFc-Flag tag, was expressed in HEK293.
<b>Expression System</b>	HEK293
<b>Species</b>	Human
<b>Tag</b>	N-hFc-Flag Tag
<b>Form</b>	Lyophilized from a 0.2 $\mu$ m filtered PBS, 6% Trehalose, pH 7.4
<b>Molecular Mass</b>	44.5 kDa
<b>Protein length</b>	13-261aa
<b>AA Sequence</b>	MQKGDQNPQIAAHVISEASSKTTSVLQWAEKGYTMSNNLVTLENGKQL TVKRQGLYYIYAQVTFCSNREASSQAPFIASLCLKSPGRFERILLRAANTH SSAKPCGQQSIHLGGVFELQPGASVFNVTDP SQVSHGTGFTSFGLLKL
<b>Endotoxin</b>	Less than 1.0 EU/ $\mu$ g as determined by LAL method.
<b>Purity</b>	Greater than 87% as determined by SDS-PAGE.
<b>Biological Activity</b>	<input type="checkbox"/> Measured by its binding ability in a functional ELISA. Immobilized CD40L at 2 $\mu$ g/ml can bind Anti- CD40L Rabbit Monoclonal Antibody <input type="checkbox"/> CSB-RA156386A0HU <input type="checkbox"/> , the EC50 is 2.353-3.232 ng/ml.
<b>Storage</b>	Store at -20°C/-80°C upon receipt, aliquoting is necessary for multiple use. Avoid repeated freeze-thaw cycles.
<b>Reconstitution</b>	We recommend that this vial be briefly centrifuged prior to opening to bring the contents to the bottom. Please reconstitute protein in deionized sterile water to a concentration of 0.1-1.0 mg/mL. We recommend to add 5-50% of glycerol (final concentration) and aliquot for long-term storage at -20°C/-80°C. Our default final concentration of glycerol is 50%. Customers could use it as reference.

## SDS-PAGE



**Bioactivity-ELISA 1**



**Measured by its binding ability in a functional ELISA. Immobilized CD40L at 2 ug/ml can bind Anti- CD40L Rabbit Monoclonal Antibody, the EC50 is 2.353-3.232 ng/ml**