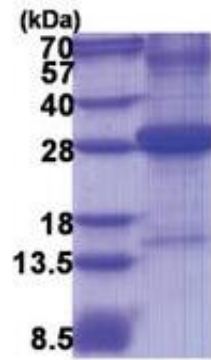


Recombinant Human CFD Protein, His-tagged

Product Information

Cat	IMP-7499
Official Symbol	CFD
Product Overview	Recombinant Human Complement factor D (26-253) protein with a His tag was expressed in <i>E. coli</i> .
Description	<i>This gene encodes a member of the S1, or chymotrypsin, family of serine peptidases. This protease catalyzes the cleavage of factor B, the rate-limiting step of the alternative pathway of complement activation. This protein also functions as an adipokine, a cell signaling protein secreted by adipocytes, which regulates insulin secretion in mice. Mutations in this gene underlie complement factor D deficiency, which is associated with recurrent bacterial meningitis infections in human patients. Alternative splicing of this gene results in multiple transcript variants. At least one of these variants encodes a preproprotein that is proteolytically processed to generate the mature protease. [provided by RefSeq, Nov 2015]</i>
Expression System	<i>E. coli</i>
Species	Human
Tag	His
Form	Presentation State: Purified State: Liquid purified protein Buffer System: 20 mM Tris-HCl buffer (pH 8.0) containing 10% glycerol 0.4M Urea
Molecular Mass	26.6 kDa
AA Sequence	MGSSHHHHHSSGLVPRGSHMILGGREAEAHARPYMASVQLNGAHL CG GVLVAEQWVLSAAHCLEDAADGKVQVLLGAHSLSQPEPSKRLYDVLRAV PHPDSQPDTIDHDL LLLQLSEKATLGPAVRPLPWQRVDRDVAPGTLCDVA GWGIVNHAGRRPDSLQHVLLPVLDRATCNRRTHHDGAITERLMCAESNR RDSCKGDSGGPLVCGGVLEGVVTSGSRVCGNRKKPGIYTRVASYAAWID SVLA
Purity	> 85% by SDS-PAGE.
Storage	Store undiluted at 2-8 centigrade for one week or (in aliquots) at -20 to -80 centigrade for longer. Avoid repeated freezing and thawing. Shelf life: one year from despatch.
Concentration	lot specific
SDS-PAGE	



15% SDS-PAGE (3ug)