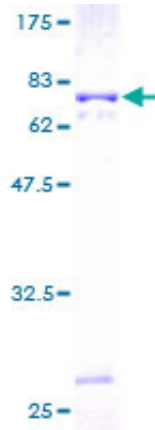


Recombinant Human LILRA2 Protein (1-466), N-GST-tagged

Product Information

Cat	IMP-7939
Official Symbol	LILRA2
Product Overview	Human LILRA2 full-length ORF (AAH27916.1, 1 a.a.-466 a.a.) recombinant protein with GST tag at N-terminal. was expressed in Wheat Germ (in vitro).
Description	Leukocyte Ig-like receptors (LIRs) are a family of immunoreceptors expressed predominantly on monocytes and B cells and at lower levels on dendritic cells and natural killer (NK) cells. All LIRs in subfamily B have an inhibitory function. LIRs in subfamily A, with short cytoplasmic domains lacking an immunoreceptor tyrosine-based inhibitory motif (ITIM) and with transmembrane regions containing a charged arginine residue, may initiate stimulatory cascades. One member of subfamily A lacks a transmembrane region and is presumed to be a soluble receptor.
Expression System	Wheat Germ (in vitro)
Species	Human
Tag	N-GST
Form	50 mM Tris-HCl, 10 mM reduced Glutathione, pH=8.0 in the elution buffer.
Molecular Mass	77 kDa
Protein length	1-466
AA Sequence	MTPILTVLICLGLSLGPRTHVQAGHLPKPTLWAEPGSVIIQGSPVTLRCQG SLQAEEYHLYRENKSASWVRRRIQEPGKNGQFPPIPSIAREHAGRYHCQYY SHNHSSEYSDPLELVVTGAYGKPTLSALPSPVVTLGGNVTLQCVSQVAFD GFILCKEGEDEHPQRLNSHSHARGWSWAIFSVGPVSPSRRWSYRCYAY DSNSPYVWSLPSDLELLVPGVSKKPSLSVQPGPMVAPGESLTLQCVSD VGYDRFVLYKEGERDFLQRPGWQPQAGLSQANFTLGPVSPSHGGQYRC YSAHNLSSEWSAPSDPLDILITGQFYDRPSLSVQPVPTVAPGKNVTLLCQ SRGQFHTFLLTKEGAGHPPLHLRSEHQAAQONQAEFRMGVPVTSAHVGTY RCYSSLSSNPYLLSLPSDPLELVVSASLGQHPQDYTVENLIRMGVAGLVL VVLGILLFEAQHSQRSLQDAAGR
Applications	ELISA; WB (Recombinant protein); Antibody Production; Protein Array
Notes	Best use within three months from the date of receipt of this protein.
Storage	Store at -80 centigrade. Aliquot to avoid repeated freezing and thawing.

SDS-PAGE



12.5% SDS-PAGE Stained with Coomassie Blue.