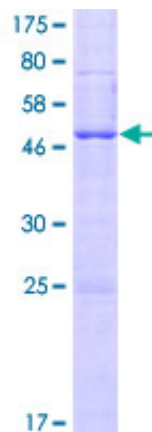


Recombinant Human TMEM26 Protein (1-223), N-GST-tagged

Product Information

| | |
|--------------------------|---|
| Cat | IMP-8147 |
| Official Symbol | TMEM26 |
| Product Overview | Human TMEM26 full-length ORF (AAH42872.1, 1 a.a.-223 a.a.) recombinant protein with GST-tag at N-terminal was expressed in Wheat Germ (in vitro). |
| Expression System | Wheat Germ (in vitro) |
| Species | Human |
| Tag | N-GST |
| Form | 50 mM Tris-HCl, 10 mM reduced Glutathione, pH=8.0 in the elution buffer. |
| Molecular Mass | 52.2 kDa |
| Protein length | 1-223 |
| AA Sequence | MEGLVFLNALATRLLFLLHSLVGVWRVTEVKKEPRYWLLALLNLLLFLETA LTLKFKRGRGYKWFSPAIFLYLISIVPSLWLELHHETQYCSIQAEGTSQNT SRKEDFNQTLTSNEQTSRADDLIETAKVFNLLSTVCEKVWTLGLHQTFLL LMLIIGRWLLPIGGGITRDQLSQQLLMFVGTAAADILEFTSETLEEQNVRLCW KNSTNRRHTNPKWQLVLF |
| Applications | ELISA; WB (Recombinant protein); Antibody Production; Protein Array |
| Notes | Best use within three months from the date of receipt of this protein. |
| Storage | Store at -80 centigrade. Aliquot to avoid repeated freezing and thawing. |

SDS-PAGE



12.5% SDS-PAGE Stained with Coomassie Blue.