

Recombinant Human IL12B Protein (23-328), His-tagged

Product Information

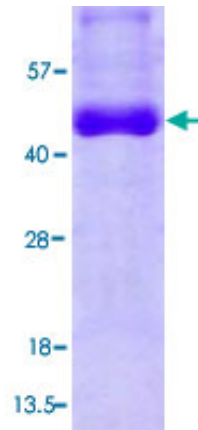
| | |
|--------------------------|--|
| Cat | IMP-8471 |
| Official Symbol | IL12B |
| Product Overview | Human IL12B (NP_002178, 23 a.a.-328 a.a.) partial recombinant protein with His tag was expressed in Hi-5 cells. |
| Description | <p>This gene encodes a subunit of interleukin 12, a cytokine that acts on T and natural killer cells, and has a broad array of biological activities. Interleukin 12 is a disulfide-linked heterodimer composed of the 40 kD cytokine receptor like subunit encoded by this gene, and a 35 kD subunit encoded by IL12A. This cytokine is expressed by activated macrophages that serve as an essential inducer of Th1 cells development. This cytokine has been found to be important for sustaining a sufficient number of memory/effector Th1 cells to mediate long-term protection to an intracellular pathogen. Overexpression of this gene was observed in the central nervous system of patients with multiple sclerosis (MS), suggesting a role of this cytokine in the pathogenesis of the disease. The promoter polymorphism of this gene has been reported to be associated with the severity of atopic and non-atopic asthma in children.</p> |
| Expression System | Insect cells |
| Species | Human |
| Tag | His |
| Form | Liquid, In 20 mM Tris-HCl buffer, 100 mM NaCl, pH 8.0 (2 mM DTT, 20% glycerol, 0.1 mM PMSF). |
| Molecular Mass | 35.8 kDa |
| Protein length | 23-328 |
| AA Sequence | ADPIWELKKDVYVVVELDWYDPDAPGEMVVLTCDTPEEDGITWTLDQSSEV LGSGKTLTIQVKEFGDAGQYTCHKGGEVLSHSLLLLHKKEDGIWSTDILKD QKEPKNKTFLRCEAKNYSGRFTCWWLTTISTDLTFSVKSSRGSSDPQGV TCGAATLSAERVGRDNKEYEYSVEQCEDSACPAAEESLPIEVMVDAVHK LKYENYTSSFFIRDIIKPDPPKNLQLKPLKNSRQVEVSWEYPDTWSTPHSY FSLTFCVQVQGKSKREKKDRVFTDKTSATVICRKNASISVRAQDRYYSSS WSEWASVPCSHHHHHH |
| Purity | > 90% by SDS-PAGE |
| Applications | SDS-PAGE |
| Storage | Store at 2 centigrade to 8 centigrade for 1 week. For long term storage, aliquot and store at -20 to -80 centigrade. Aliquot to avoid repeated freezing |

and thawing.

0.25 mg/mL

Concentration

SDS-PAGE



Loading 3 μ g protein in 15% SDS-PAGE