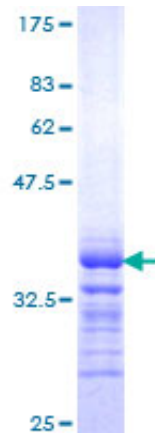


# Recombinant Human KLRC1 Protein (1-70), N-GST-tagged

## Product Information

---

<b>Cat</b>	IMP-8541
<b>Official Symbol</b>	KLRC1
<b>Product Overview</b>	Human KLRC1 partial ORF ( NP_998823, 1 a.a.-70 a.a.) recombinant protein with GST-tag at N-terminal was expressed in Wheat Germ (in vitro).
<b>Description</b>	Natural killer (NK) cells are lymphocytes that can mediate lysis of certain tumor cells and virus-infected cells without previous activation. They can also regulate specific humoral and cell-mediated immunity. The protein encoded by this gene belongs to the killer cell lectin-like receptor family, also called NKG2 family, which is a group of transmembrane proteins preferentially expressed in NK cells. This family of proteins is characterized by the type II membrane orientation and the presence of a C-type lectin domain. This protein forms a complex with another family member, KLRD1/CD94, and has been implicated in the recognition of the MHC class I HLA-E molecules in NK cells. The genes of NKG2 family members form a killer cell lectin-like receptor gene cluster on chromosome 12. Four alternatively spliced transcript variants encoding two distinct isoforms have been observed.
<b>Expression System</b>	Wheat Germ (in vitro)
<b>Species</b>	Human
<b>Tag</b>	N-GST
<b>Form</b>	50 mM Tris-HCl, 10 mM reduced Glutathione, pH=8.0 in the elution buffer.
<b>Molecular Mass</b>	33.44 kDa
<b>Protein length</b>	1-70
<b>AA Sequence</b>	MDNQGVIYSDLNLPPNPKRQQRKPKGNKSSILATEQEITYAELNLQKASQ DFQGNDKTYHCKDLPSAPEK
<b>Applications</b>	ELISA; WB (Recombinant protein); Antibody Production; Protein Array
<b>Notes</b>	Best use within three months from the date of receipt of this protein.
<b>Storage</b>	Store at -80 centigrade. Aliquot to avoid repeated freezing and thawing.
<b>SDS-PAGE</b>	



***12.5% SDS-PAGE Stained with Coomassie Blue.***