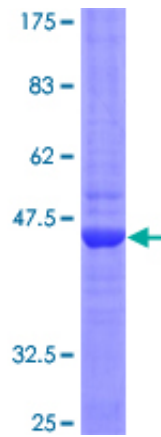


Recombinant Human LTA Protein (1-205), N-GST-tagged

Product Information

Cat	IMP-8595
Official Symbol	LTA
Product Overview	Human LTA full-length ORF (AAH34729, 1 a.a.-205 a.a.) recombinant protein with GST-tag at N-terminal was expressed in Wheat Germ (in vitro).
Description	The encoded protein, a member of the tumor necrosis factor family, is a cytokine produced by lymphocytes. The protein is highly inducible, secreted, and forms heterotrimers with lymphotoxin-beta which anchor lymphotoxin-alpha to the cell surface. This protein also mediates a large variety of inflammatory, immunostimulatory, and antiviral responses, is involved in the formation of secondary lymphoid organs during development and plays a role in apoptosis. Genetic variations in this gene are associated with susceptibility to leprosy type 4 and psoriatic arthritis
Expression System	Wheat Germ (in vitro)
Species	Human
Tag	N-GST
Form	50 mM Tris-HCl, 10 mM reduced Glutathione, pH=8.0 in the elution buffer.
Molecular Mass	48.29 kDa
Protein length	1-205
AA Sequence	MTPPERLFLPRVRGTTLHLLLLGLLLVLPGAQGLPGVGLTPSAAQTARQ HPKMHLAHSTLKPA AHLIGDPSKQNSLLWRANTDRAFLQDGFSLSNNSLL VPTSGIYFVYSQVVFSGKAYSPKATSSPLYLAHEVQLFSSQYPFHVPLLSS QKMVYPGLQEPWLHSMYHGAAFQLTQGDQLSTHTDGIPHLVLSPSTVFF GAFAL
Applications	ELISA; WB (Recombinant protein); Antibody Production; Protein Array
Notes	Best use within three months from the date of receipt of this protein.
Storage	Store at -80 centigrade. Aliquot to avoid repeated freezing and thawing.
SDS-PAGE	



12.5% SDS-PAGE Stained with Coomassie Blue.