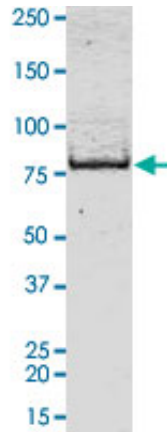


Recombinant Human MET Protein, Tag free

Product Information

Cat	IMP-8638
Official Symbol	MET
Product Overview	Human MET (NM_000245.2, 956 a.a.-1390 a.a.) Y1230C mutant partial protein expressed in Sf9 cells.
Description	The proto-oncogene MET product is the hepatocyte growth factor receptor and encodes tyrosine-kinase activity. The primary single chain precursor protein is post-translationally cleaved to produce the alpha and beta subunits, which are disulfide linked to form the mature receptor. Various mutations in the MET gene are associated with papillary renal carcinoma. Two transcript variants encoding different isoforms have been found for this gene.
Expression System	Insect cells
Species	Human
Tag	Tag free
Form	Liquid, In 50 mM Hepes, 100 mM NaCl, pH 7.5 (5 mM DTT, 15 mM reduced glutathione, 20% glycerol)
Molecular Mass	78.727 kDa
Protein length	956-1390
AA Sequence	KKRKQIKDLGSELVRYDARVHTPHLDRLVSARSVSPTTEMVSNESVDYRA TFPEDQFPNSSQNGSCRQVQYPLTDMSPILTSGDSDISSPLLQNTVHIDL SALNPELVQAVQHVVIGPSSLIVHFNEVIGRGHFGCVYHGTLLDNDGKKIH CAVKSLNRITDIGEVSQFLTEGIIMKDFSHPNVLSLLGICLRSEGSPVVLP YMKHGDLRNFIRNETHNPTVKDLIGFGLQVAKGMKYLASKKFVHRDLAAR NCMLDEKFTVKVADFGGLARDMCDKEYYSVHNKTGAKLPVKWMALESQ TQKFTTKSDVWSFGVLLWELMTRGAPPYPDVNTFDITVYLLQGRRLLQPE YCPDPLYEVMLKCWHPKAEMRPSFSELVSRISAIFSTFIGEHYVHVNATYV NVKCVAPYPSLLSSEDNADDEVDRPASFWETS
Applications	Functional Study; SDS-PAGE
Storage	Store at -80 centigrade. Aliquot to avoid repeated freezing and thawing.
Concentration	0.526 µg/µL
SDS-PAGE	



2 $\mu\text{g/lane}$ SDS-PAGE Stained with Coomassie Blue

Bioactivity-ELISA 1

