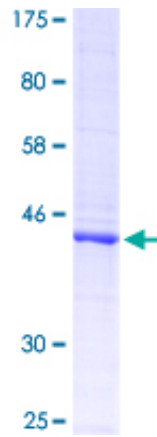


Recombinant Human PTPRC Protein (390-570), N-GST-tagged

Product Information

Cat	IMP-8793
Official Symbol	PTPRC
Product Overview	Human PTPRC partial ORF (NP_002829.2, 390 a.a.-570 a.a.) recombinant protein with GST-tag at N-terminal was expressed in Wheat Germ (in vitro).
Description	The protein encoded by this gene is a member of the protein tyrosine phosphatase (PTP) family. PTPs are known to be signaling molecules that regulate a variety of cellular processes including cell growth, differentiation, mitotic cycle, and oncogenic transformation. This PTP contains an extracellular domain, a single transmembrane segment and two tandem intracytoplasmic catalytic domains, and thus belongs to receptor type PTP. This gene is specifically expressed in hematopoietic cells. This PTP has been shown to be an essential regulator of T- and B-cell antigen receptor signaling. It functions through either direct interaction with components of the antigen receptor complexes, or by activating various Src family kinases required for the antigen receptor signaling. This PTP also suppresses JAK kinases, and thus functions as a regulator of cytokine receptor signaling. Four alternatively spliced transcripts variants of this gene, which encode distinct isoforms, have been reported.
Expression System	Wheat Germ (in vitro)
Species	Human
Tag	N-GST
Form	50 mM Tris-HCl, 10 mM reduced Glutathione, pH=8.0 in the elution buffer.
Molecular Mass	45.54 kDa
Protein length	390-570
AA Sequence	PGEPQIIFCRSEAAHQGVITWNPQRSFHNFTLCYIKETEKDCLNLDKNLI KYDLQNLKPYTKYVLSLHAYIIAKVQRNGSAAMCHFTTKSAPPSQVWNMT VSMTSDNSMHVKCRPPDRNGPHERYHLEVEAGNTLVRNESHKNCDFR VKDLQYSTDYTFKAYFHNGDYPGEPFILHHST
Applications	ELISA; WB (Recombinant protein); Antibody Production; Protein Array
Notes	Best use within three months from the date of receipt of this protein.
Storage	Store at -80 centigrade. Aliquot to avoid repeated freezing and thawing.
SDS-PAGE	



12.5% SDS-PAGE Stained with Coomassie Blue.