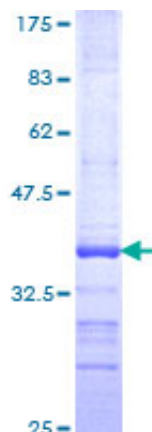


# Recombinant Human LGR6 Protein (403-496), N-GST-tagged

## Product Information

<b>Cat</b>	IMP-8821
<b>Official Symbol</b>	LGR6
<b>Product Overview</b>	Human LGR6 partial ORF ( NP_067649, 403 a.a.-496 a.a.) recombinant protein with GST-tag at N-terminal was expressed in Wheat Germ (in vitro).
<b>Description</b>	This gene encodes a member of the leucine-rich repeat-containing subgroup of the G protein-coupled 7-transmembrane protein superfamily. The encoded protein is a glycoprotein hormone receptor with a large N-terminal extracellular domain that contains leucine-rich repeats important for the formation of a horseshoe-shaped interaction motif for ligand binding. Alternative splicing of this gene results in multiple transcript variants.
<b>Expression System</b>	Wheat Germ (in vitro)
<b>Species</b>	Human
<b>Tag</b>	N-GST
<b>Form</b>	50 mM Tris-HCl, 10 mM reduced Glutathione, pH=8.0 in the elution buffer.
<b>Molecular Mass</b>	36.08 kDa
<b>Protein length</b>	403-496
<b>AA Sequence</b>	ALSQAFSKDSFPKLRILEVPYAYQCCPYGMCASFFKASGQWEAEDLHLD DEESSKRPLGLLARQAENHYDQDLDELQLEMEDSKPHPSVQCSPT
<b>Applications</b>	ELISA; WB (Recombinant protein); Antibody Production; Protein Array
<b>Notes</b>	Best use within three months from the date of receipt of this protein.
<b>Storage</b>	Store at -80 centigrade. Aliquot to avoid repeated freezing and thawing.

### SDS-PAGE



**12.5% SDS-PAGE Stained with Coomassie Blue.**