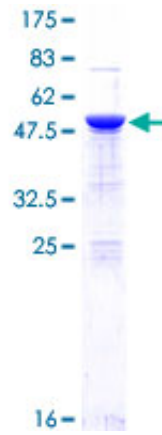


Recombinant Human RELA Protein (1-220), N-GST-tagged

Product Information

Cat	IMP-8825
Official Symbol	RELA
Product Overview	Human RELA full-length ORF (AAH11603.1, 1 a.a.-220 a.a.) recombinant protein with GST-tag at N-terminal was expressed in Wheat Germ (in vitro).
Description	NFKB1 or NFKB2 is bound to REL, RELA, or RELB to form the NFKB complex. The p50 (NFKB1)/p65 (RELA) heterodimer is the most abundant form of NFKB. The NFKB complex is inhibited by I-kappa-B proteins (NFKBIA or NFKBIB), which inactivate NFKB by trapping it in the cytoplasm. Phosphorylation of serine residues on the I-kappa-B proteins by kinases (IKBKA or IKBKB) marks them for destruction via the ubiquitination pathway, thereby allowing activation of the NFKB complex. Activated NFKB complex translocates into the nucleus and binds DNA at kappa-B-binding motifs such as 5-prime GGGRNNYYCC 3-prime or 5-prime HGGARNYYCC 3-prime (where H is A, C, or T; R is an A or G purine; and Y is a C or T pyrimidine).
Expression System	Wheat Germ (in vitro)
Species	Human
Tag	N-GST
Form	50 mM Tris-HCl, 10 mM reduced Glutathione, pH=8.0 in the elution buffer.
Molecular Mass	51.2 kDa
Protein length	1-220
AA Sequence	MDELFLIFPAEPAQASGPYVEIIEQPKQRGMRFYKCEGRSAGSIPGER STDTTKTHPTIKINGYTGP GTVRISLVTKDPPHRPHHELVGKDCRDGFYE AELCPDRCIHSFQNLGIQCVKKRDLEQAISQRIQTNNNPFQVPIEEQRGDY DLNAVRLCFQVTVRDPGRPLRLPPVLSHPIFDNRAPNTAELKICRVNRN SGSCLGGDEIFLLCDKVQ
Applications	ELISA; WB (Recombinant protein); Antibody Production; Protein Array
Notes	Best use within three months from the date of receipt of this protein.
Storage	Store at -80 centigrade. Aliquot to avoid repeated freezing and thawing.
SDS-PAGE	



12.5% SDS-PAGE Stained with Coomassie Blue.