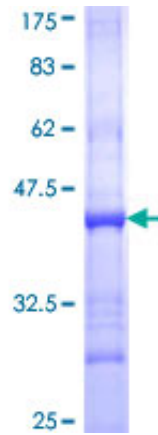


Recombinant Human CRLF2 Protein (23-132), N-GST-tagged

Product Information

Cat	IMP-8860
Official Symbol	CRLF2
Product Overview	Human CRLF2 partial ORF (NP_071431, 23 a.a.-132 a.a.) recombinant protein with GST-tag at N-terminal was expressed in Wheat Germ (in vitro).
Description	Cytokine signals are mediated through specific receptor complexes, the components of which are mostly members of the type I cytokine receptor family. Type I cytokine receptors share conserved structural features in their extracellular domain. Receptor complexes are typically heterodimeric, consisting of alpha chains, which provide ligand specificity, and beta (or gamma) chains, which are required for the formation of high-affinity binding sites and signal transduction.
Expression System	Wheat Germ (in vitro)
Species	Human
Tag	N-GST
Form	50 mM Tris-HCl, 10 mM reduced Glutathione, pH=8.0 in the elution buffer.
Molecular Mass	37.84 kDa
Protein length	23-132
AA Sequence	QGGAAEGVQIQIIFYFNLETVQVTWNASKYSRTNLTFFHYRFNGDEAYDQCT NYLLQEGHTSGCLLDAEQRDDILYFSIRNGTHPVFTASRWMVYYLKPSSP KHVRF SWHQD
Applications	ELISA; WB (Recombinant protein); Antibody Production; Protein Array
Notes	Best use within three months from the date of receipt of this protein.
Storage	Store at -80 centigrade. Aliquot to avoid repeated freezing and thawing.
SDS-PAGE	



12.5% SDS-PAGE Stained with Coomassie Blue.