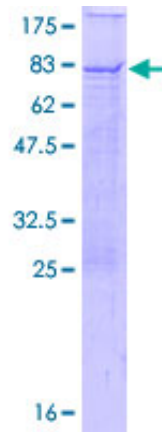


Recombinant Human BTN1A1 Protein (1-526), N-GST-tagged

Product Information

Cat	IMP-8909
Official Symbol	BTN1A1
Product Overview	Human BTN1A1 full-length ORF (AAH96312.1, 1 a.a.-526 a.a.) recombinant protein with GST-tag at N-terminal was expressed in Wheat Germ (in vitro).
Description	Butyrophilin is the major protein associated with fat droplets in the milk. It is a member of the immunoglobulin superfamily. It may have a cell surface receptor function. The human butyrophilin gene is localized in the major histocompatibility complex (MHC) class I region of 6p and may have arisen relatively recently in evolution by the shuffling of exons between 2 ancestral gene families
Expression System	Wheat Germ (in vitro)
Species	Human
Tag	N-GST
Form	50 mM Tris-HCl, 10 mM reduced Glutathione, pH=8.0 in the elution buffer.
Molecular Mass	85.4 kDa
Protein length	1-526
AA Sequence	MAVFPSSGLPRCLLTLILLQLPKLDSAPFDVIGPPEPILAVVGEDAELPCRL SPNASAHELELRWFRKKVSPAFLVHRDGREQAEQMPEYRGRATLVQD GIAKGRVALRIRGVRVSDDGGEYTCFFREDGSYEEALVHLKVAALGSDPHI SMQVQENGEICLECTSVGWYEPQVQWRTSKGEKFPSTSES RNPDEEG LFTVAASVIIRD TSAKNVSCYIQNLLL GQEKKVEISIPASSLPRLTPWIVAVA VILMVLGLLTIGSIFFTWRLYNERPRERRNEFSSKERLLEELKWKKATLHA VDVTLPDPTAHPHFLYEDSKSVRLEDSRQKLPEKTERFDSWPCVLGRE TFTSGRHYWEVEVDRTDWAIGVCRENVMMKKGFDPMTPENGFWAVELY GNGYWALTPLRTPPLAGPPRRVGFILDYESGDISFYNMNDGSDIYTF SN VTFSGPLRPFCLWSSGKKPLTICPIADGPERVTVIANAQDLSKEIPLSPM GEDSAPRDADTLH SKLIPTQPSQGAP
Applications	ELISA; WB (Recombinant protein); Antibody Production; Protein Array
Notes	Best use within three months from the date of receipt of this protein.
Storage	Store at -80 centigrade. Aliquot to avoid repeated freezing and thawing.
SDS-PAGE	



12.5% SDS-PAGE Stained with Coomassie Blue.