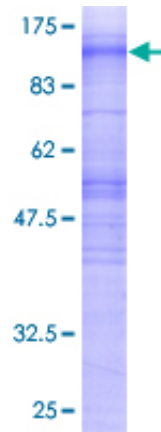


Recombinant Human MS4A3 Protein (1-214), N-GST-tagged

Product Information

Cat	IMP-9214
Official Symbol	MS4A3
Product Overview	Human MS4A3 full-length ORF (AAH08487, 1 a.a.-214 a.a.) recombinant protein with GST-tag at N-terminal was expressed in Wheat Germ (in vitro).
Description	<i>This gene encodes a member of the membrane-spanning 4A gene family. Members of this protein family are characterized by common structural features and similar intron/exon splice boundaries and display unique expression patterns among hematopoietic cells and nonlymphoid tissues. This family member likely plays a role in signal transduction and may function as a subunit associated with receptor complexes. The gene encoding this protein is localized to 11q12, among a cluster of related family members. Alternative splicing may result in multiple transcript variants; however, not all variants have been fully described.</i>
Expression System	Wheat Germ (in vitro)
Species	Human
Tag	N-GST
Form	50 mM Tris-HCl, 10 mM reduced Glutathione, pH=8.0 in the elution buffer.
Molecular Mass	49.28 kDa
Protein length	1-214
AA Sequence	MASHEVDNAELGSASARGTPGSEAGPEELNTSVYQPIDGSPDYQKAKLQ VLGAIQILNAAMILALGVFLGSLQYPYHFQKHFFFTFYTGYPWGAFFCS SGTLSVVAGIKPTRTWIQNSFGMNIASATIALVGTAFLSLNIAVNIQSLRSC HSSSESPDLCNYMGSI SNGMVSLLLILTLLELCVTISTIAMWCNANCCNSR EEISSPPNSV
Applications	ELISA; WB (Recombinant protein); Antibody Production; Protein Array
Notes	Best use within three months from the date of receipt of this protein.
Storage	Store at -80 centigrade. Aliquot to avoid repeated freezing and thawing.
SDS-PAGE	



12.5% SDS-PAGE Stained with Coomassie Blue.