

# Recombinant Human CD209 Protein (60-404aa), C-hlgG-His-Tagged

## Product Information

---

<b>Cat</b>	IMP-9527
<b>Official Symbol</b>	CD209
<b>Product Overview</b>	Recombinant human DC-SIGN/CD209, fused to hlgG-His-tag at C-terminus, was expressed in insect cell and purified by using conventional chromatography techniques.
<b>Description</b>	DC-SIGN/CD209, also known as Dendritic Cell-specific ICAM-3 Grabbing Non-integrin, is a member of the C-type lectin family. It is Pathogen-recognition receptor expressed on the surface of immature dendritic cells (DCs) and involved in initiation of primary immune response. DC-SIGN on macrophages recognises and binds with high affinity to high-mannose type N-glycans, a class of pathogen associated molecular patterns PAMPs commonly found on viruses, bacteria and fungi. This binding interaction activates phagocytosis. It has a high affinity for the ICAM3 molecule and binds various microorganisms by recognizing high-mannose-containing glycoproteins on their envelopes and especially functions as receptor for several viruses such as HIV and Hepatitis C. Besides functioning as an adhesion molecule, recent study has also shown that DC-SIGN can initiate innate immunity by modulating toll-like receptors, though the detailed mechanism is not yet known. It together with other C-type lectins is involved in recognition of tumors by dendritic cells. It is also a potential engineering target for dendritic cell based cancer vaccine.
<b>Expression System</b>	Baculovirus
<b>Species</b>	Human
<b>Tag</b>	C-hlgG-His
<b>Form</b>	Liquid in Phosphate-Buffered Saline (pH 7.4) containing 10% glycerol
<b>Molecular Mass</b>	66.5 kDa (587 aa)
<b>Protein length</b>	60-404
<b>AA Sequence</b>	<ADP>VSKVPSSISQEQSRQDAIYQNLTLKAAVGELSEKSKLQEIQELT QLKAAVGELPEKSKLQEIQELTRLKAAVGELPEKSKLQEIQELTWLKAA VGELPEKSKMQEIQELTRLKAAVGELPEKSKQQEIQELTRLKAAVGEL PEKSKQQEIQELTRLKAAVGELPEKSKQQEIQELTQLKAAVERLCHPC PWEWTFQGNCFMSNSQRNWHDSITACKEVGAQLVVIKSAEEQNFLQ LQSSRSNRFTWMGLSDLNQEGTWQWVDGSPLLPSFKQYWNRGEPNNV GEEDCAEFSGNGWNDDKCNLAKFWICKSAASCSRDEEQFLSPAPATP NPPPA<VEPKSCDKTHTCPPCPAPELLGGPSVFLFPPKPKDTLMISRTPE

VTCVVVDVSHEDPEVKFNWYVDGVEVHNAKTKPREEQYNSTYRVVSVLT  
VLHQDWLNGKEYKCKVSNKALPAPIEKTISKAKGQPREPQVYTLPPSRDE  
LTKNQVSLTCLVKGFYPSDIAVEWESNGQPENNYKTTPPVLDSDGSFFLY  
SKLTVDKSRWQQGNVFSCSVMHEALHNHYTQKSLSLSPGKHHHHHH>

**Endotoxin**

< 1 EU/ $\mu$ g of protein (determined by LAL method)

**Purity**

> 90% by SDS-PAGE

**Applications**

SDS-PAGE

**Notes**

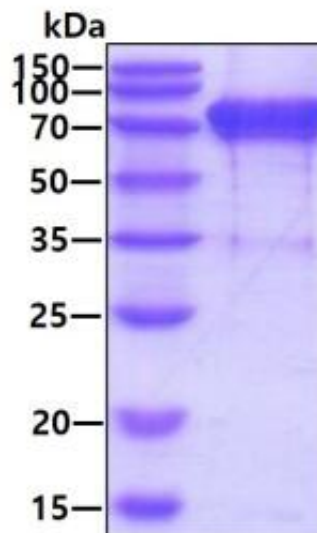
*Note: For research use only. This product is not intended or approved for human, diagnostics or veterinary use.*

**Storage**

*Can be stored at +2 to +8 centigrade for 1 week. For long term storage, aliquot and store at -20 to -80 centigrade. Avoid repeated freezing and thawing cycles.*

**Concentration**

0.25 mg/mL (determined by Absorbance at 280nm)

**SDS-PAGE**

**3  $\mu$ g by SDS-PAGE under reducing condition and visualized by coomassie blue stain.**